

**AAFRHW PROPERTY, LLC**

FAIRFIELD RD  
TOWNSHIP OF HOWELL  
MONMOUTH COUNTY, NEW JERSEY

Licensee Name: Sean D. Naeger  
Discipline: Registered Architect  
License Registration No.: 21A02179200  
Registration Expires: 7/31/2023

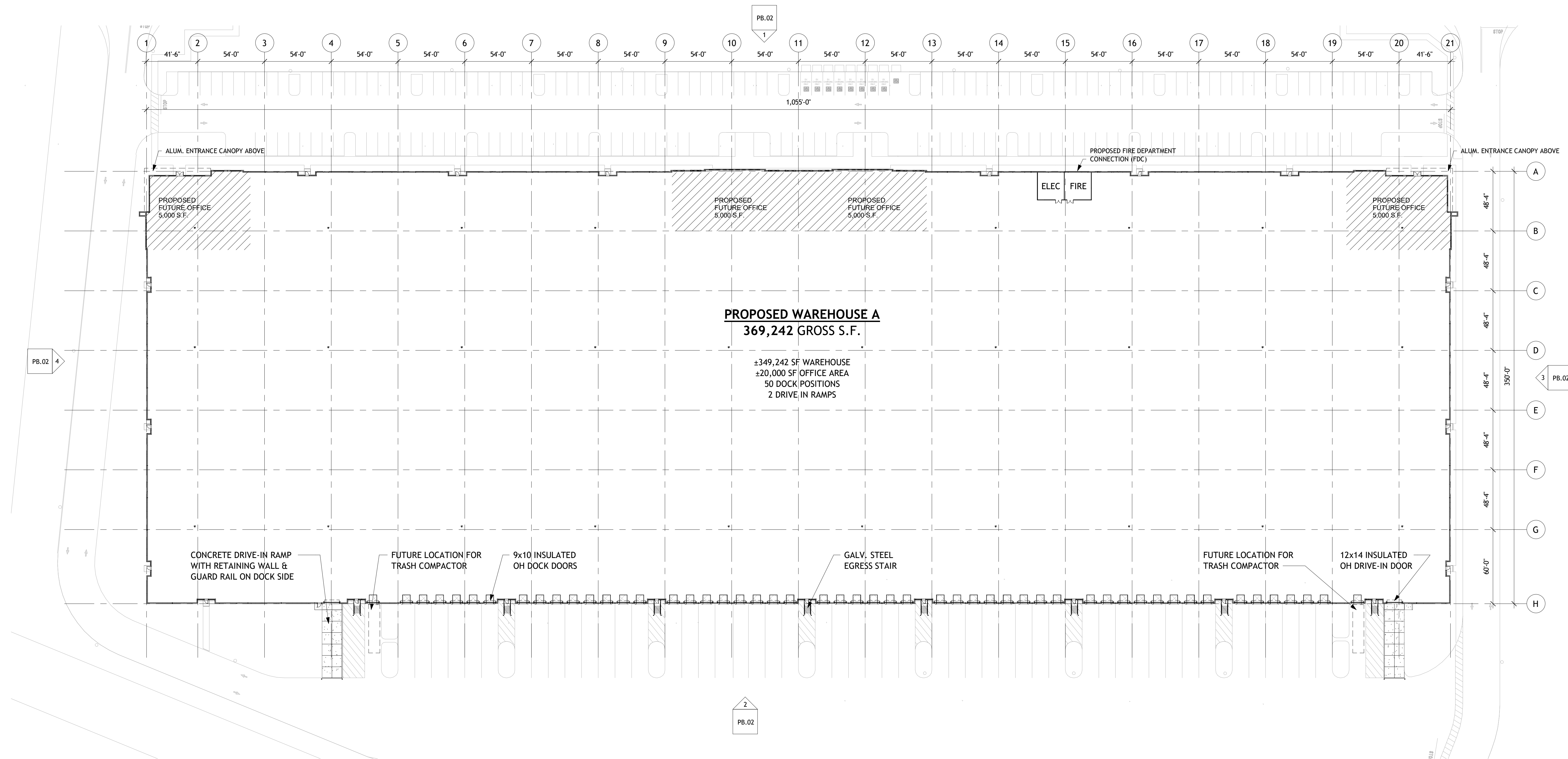
The Professional Architect's seal affixed to this sheet indicates that the named Architect has prepared or directed the preparation of the material shown only on this sheet. Other drawings and documents not exhibiting this seal shall not be considered prepared by or the responsibility of the undersigned.

REVISION:		
REV 1	PLANNING BOARD COMMENTS	01-18-2022
REV 2		05-16-2022
REV 3		06-20-2022

Sheet Issue Date:	01.18.22
Job Number:	21105
Drawn By:	BA
Checked By:	TM
Drawing Title:	

BUILDING A  
OVERALL FLOOR PLAN

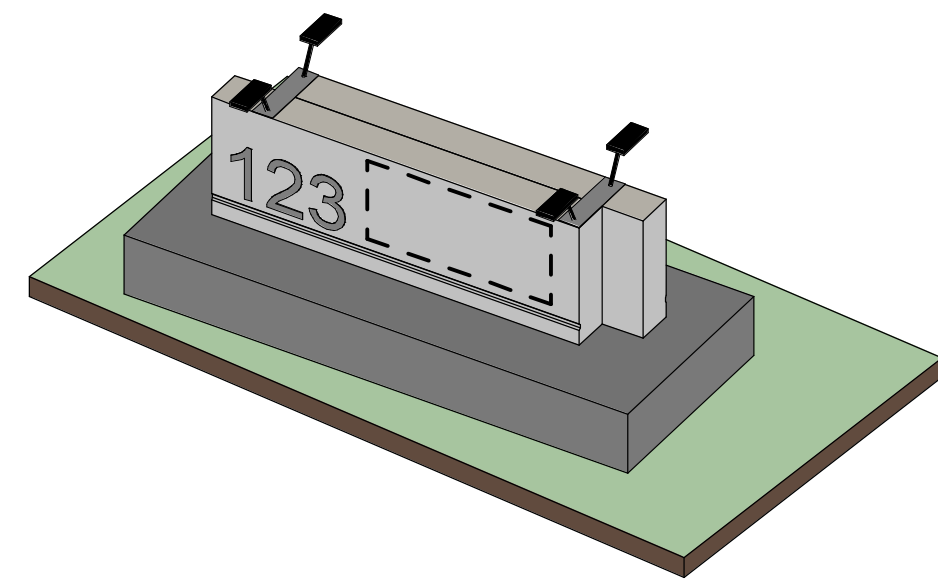
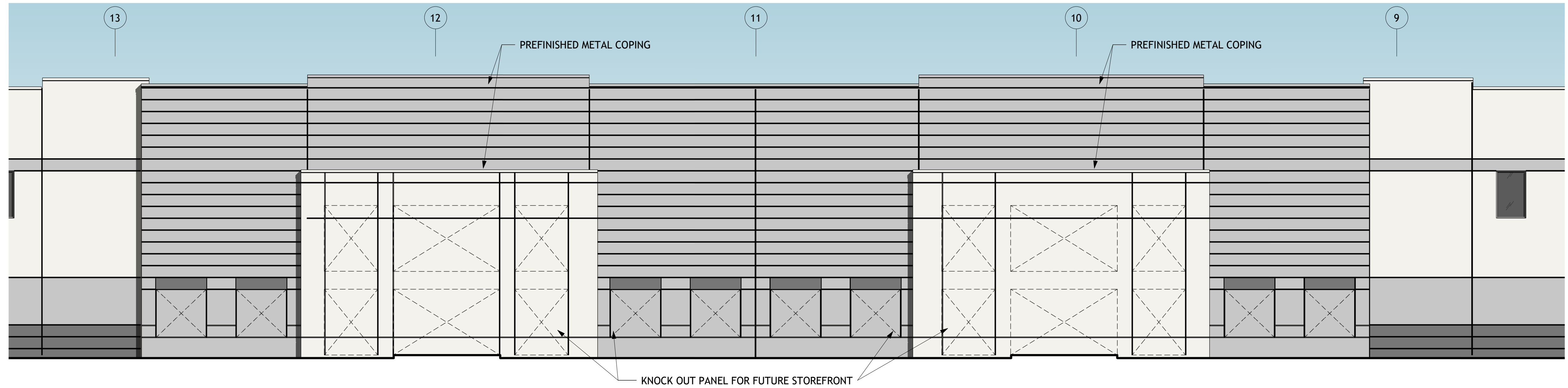
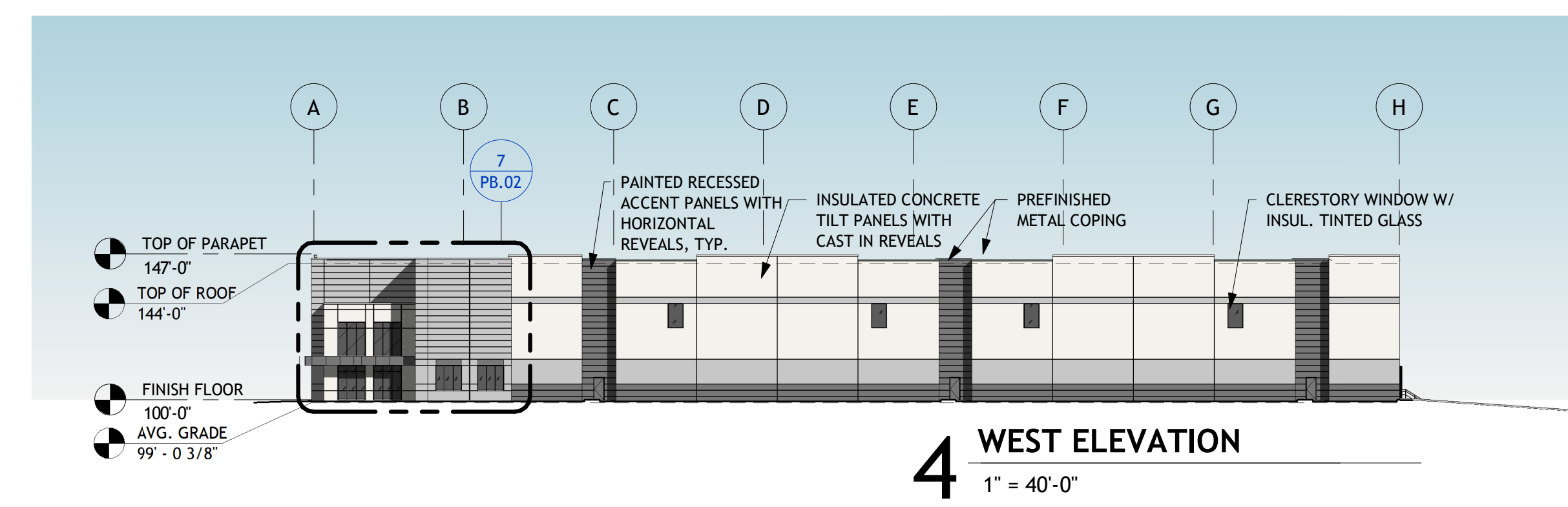
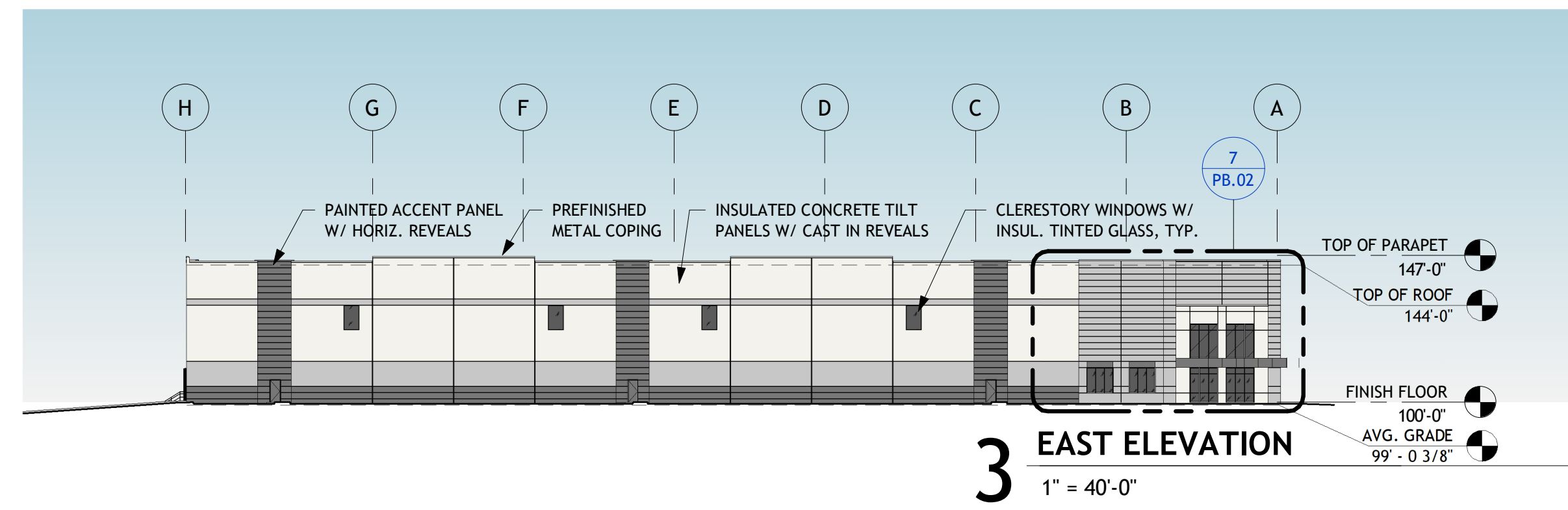
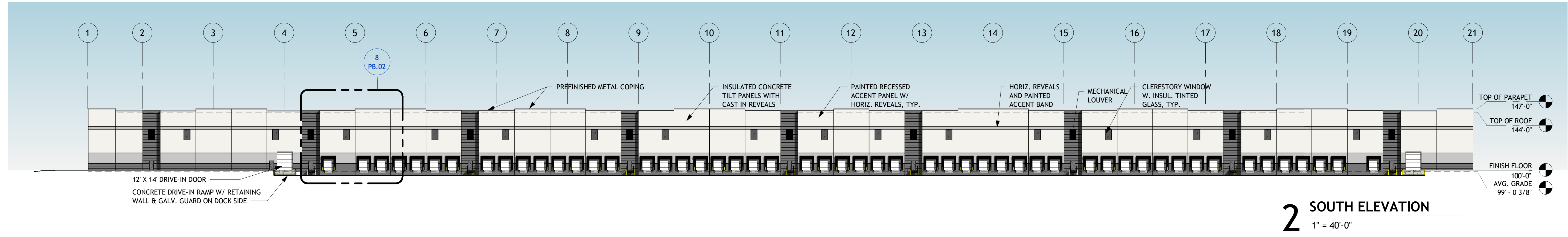
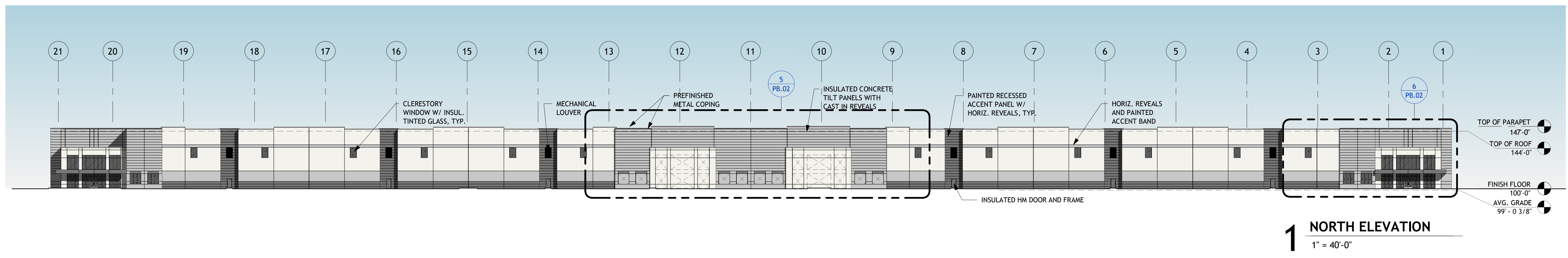
**PB.01**



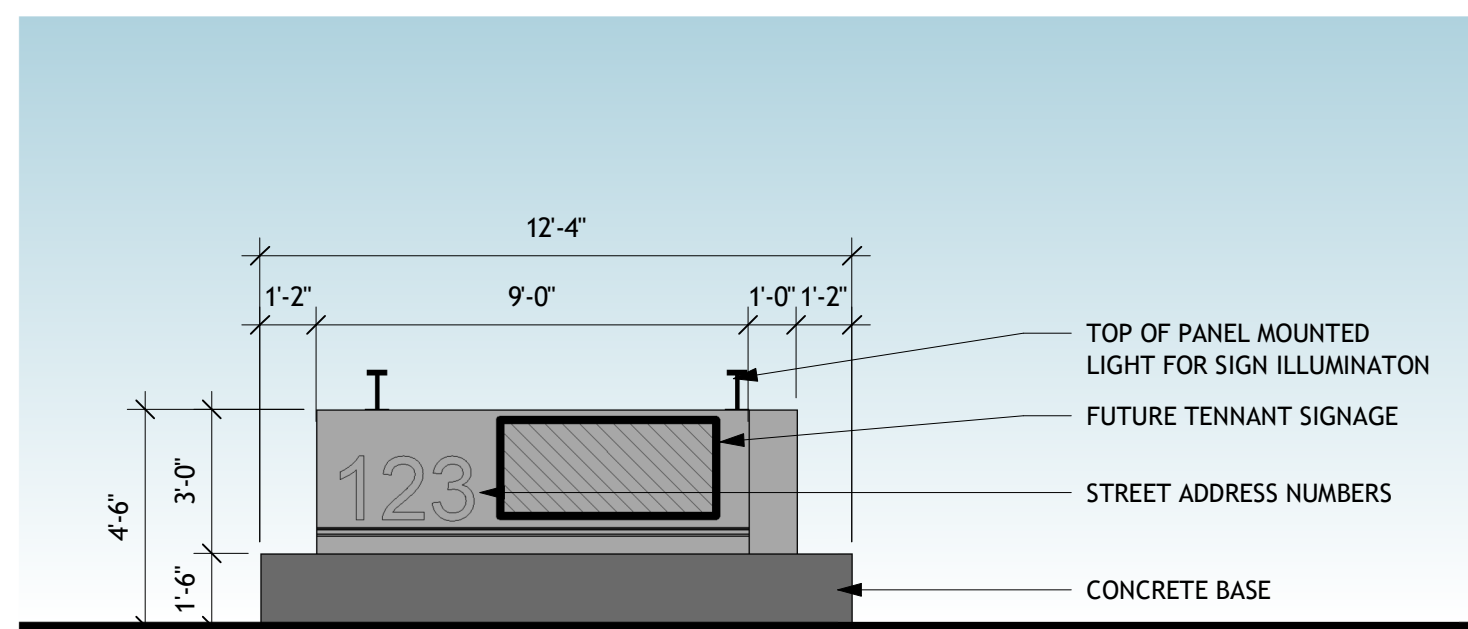
**1 FLOOR PLAN**  
1" = 40'-0"

**BUILDING AND MONUMENT SIGN MATERIALS LEGEND**

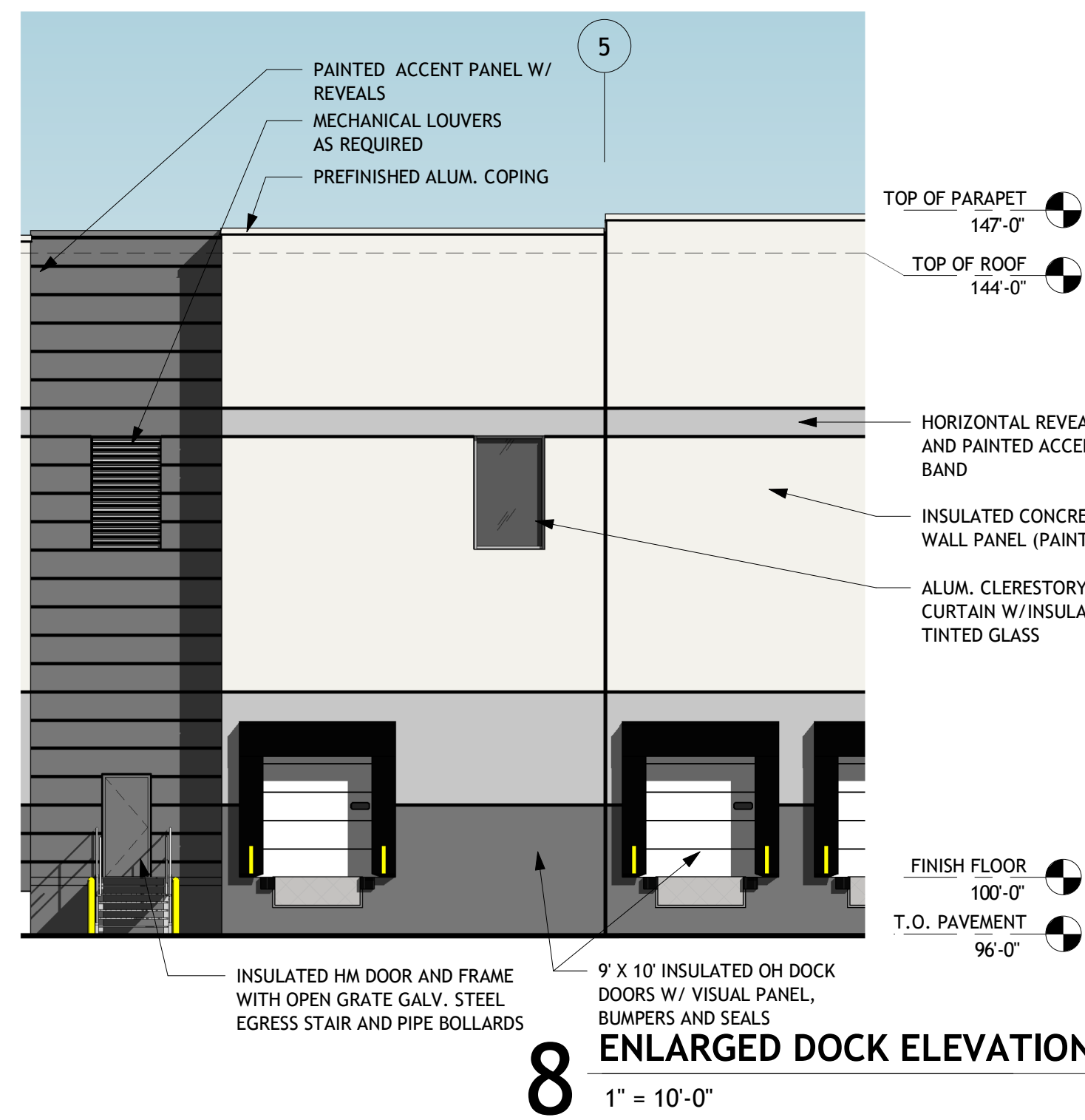
<b>PAINTS</b>	
	PT-1 LIGHT
	PT-2 MEDIUM
	PT-3 DARK
<b>ALUMINUM FRAMING</b>	
	AL-1 (CLEAR ANODIZED STOREFRONT)
	ACM-1 (ALUMINUM ENTRANCE CANOPIES)
<b>GLASS AND GLAZING</b>	
	VISION GLASS
	SPANDREL GLASS



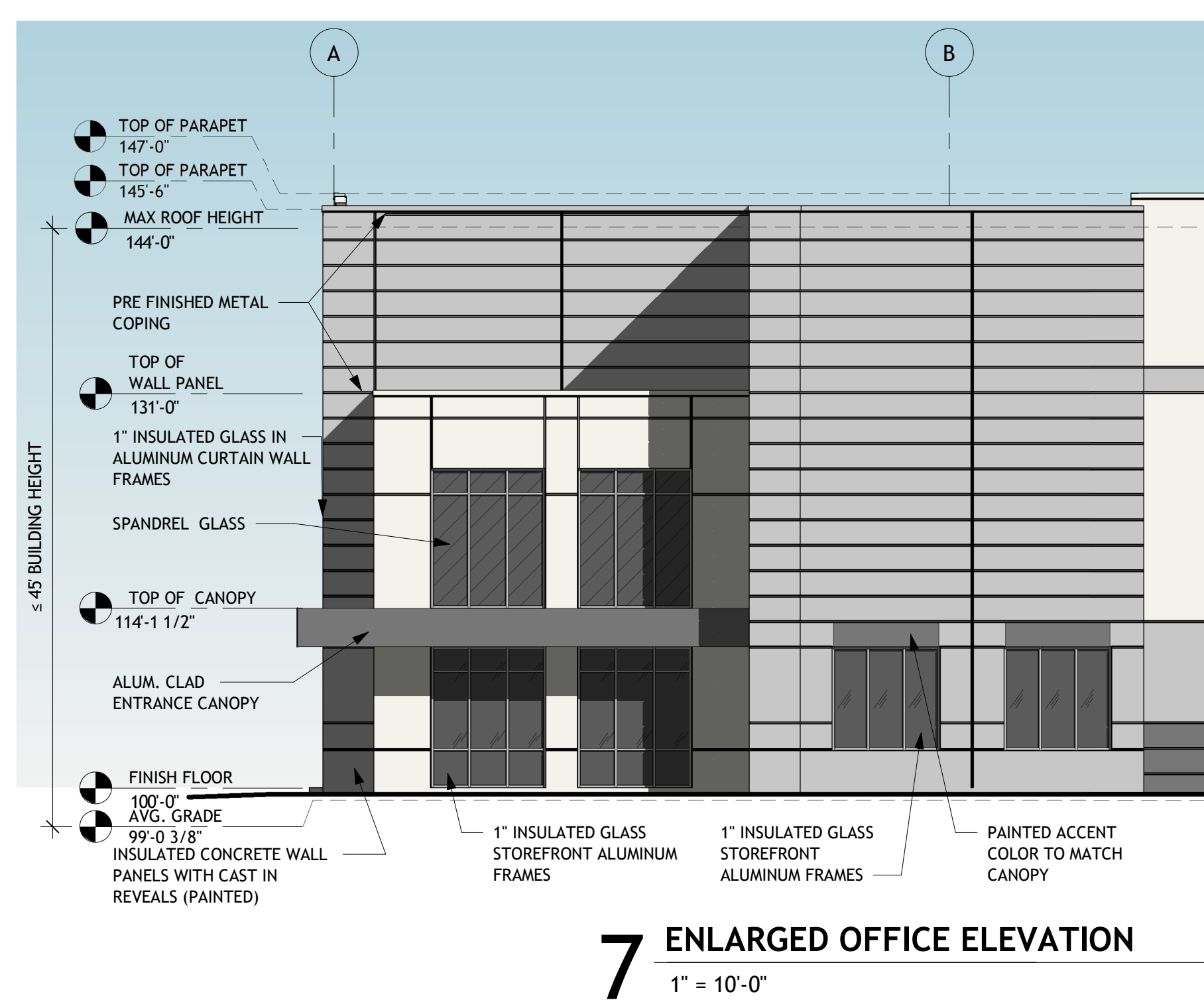
**10 3D MONUMENT SIGN**



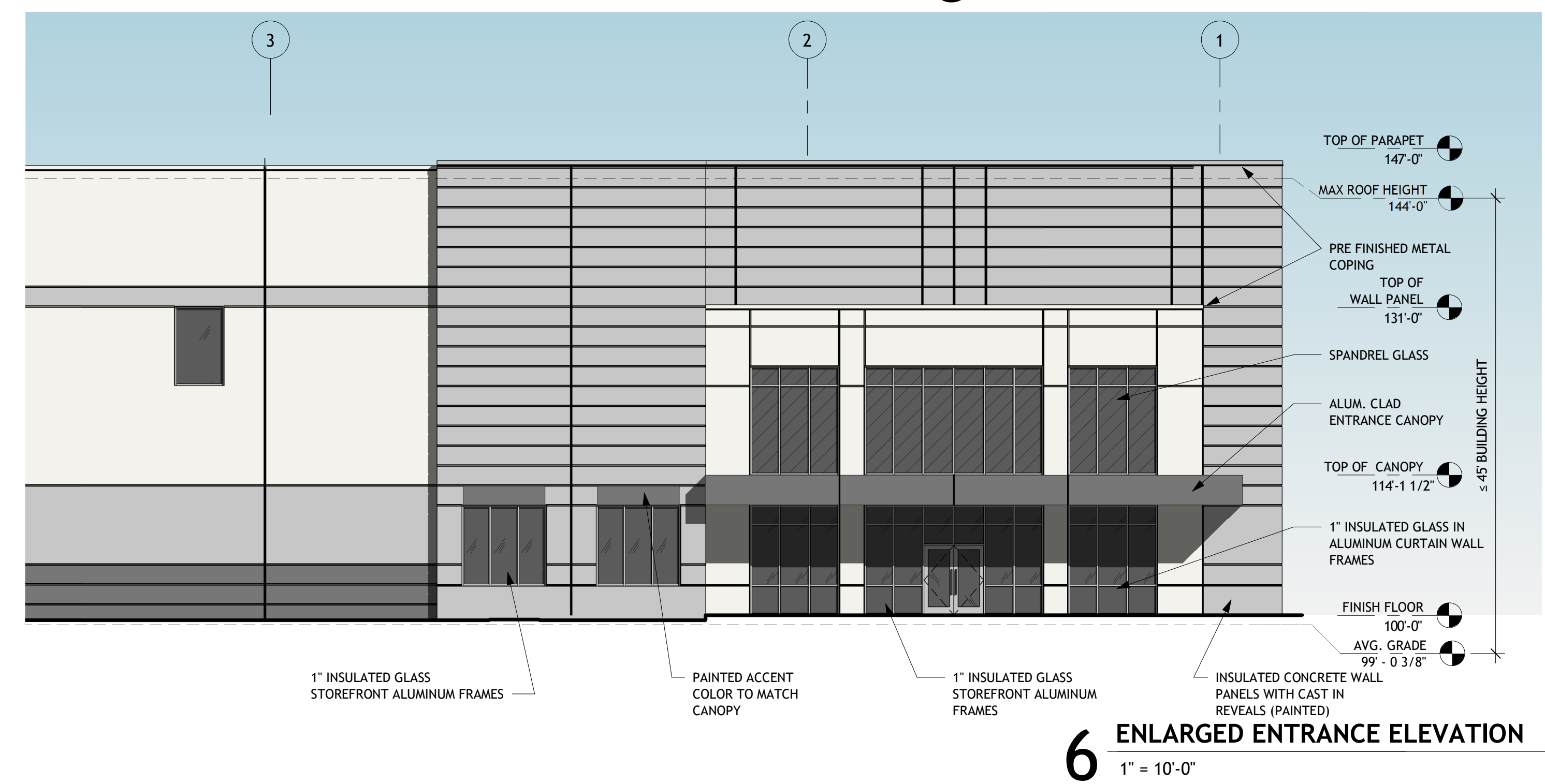
**9 MONUMENT SIGN**  
1/4" = 1'-0"



**8 ENLARGED DOCK ELEVATION**  
1" = 10'-0"



**7 ENLARGED OFFICE ELEVATION**  
1" = 10'-0"



**6 ENLARGED ENTRANCE ELEVATION**  
1" = 10'-0"

<b>REVISION:</b>	
REV 1 PLANNING	01-18-2022
BOARD COMMENTS	
REV 2	05-16-2022
REV 3	06-20-2022

Sheet Issue Date:	01-18-22
Job Number:	21105
Drawn By:	BA
Checked By:	TM
Drawing Title:	

**AAFRHW PROPERTY, LLC**

FAIRFIELD RD  
TOWNSHIP OF HOWELL  
MONMOUTH COUNTY, NEW JERSEY

Licensee Name: Sean D. Naeger  
Discipline: Registered Architect  
License Registration No.: 21A02179200  
Registration Expires: 07/31/23

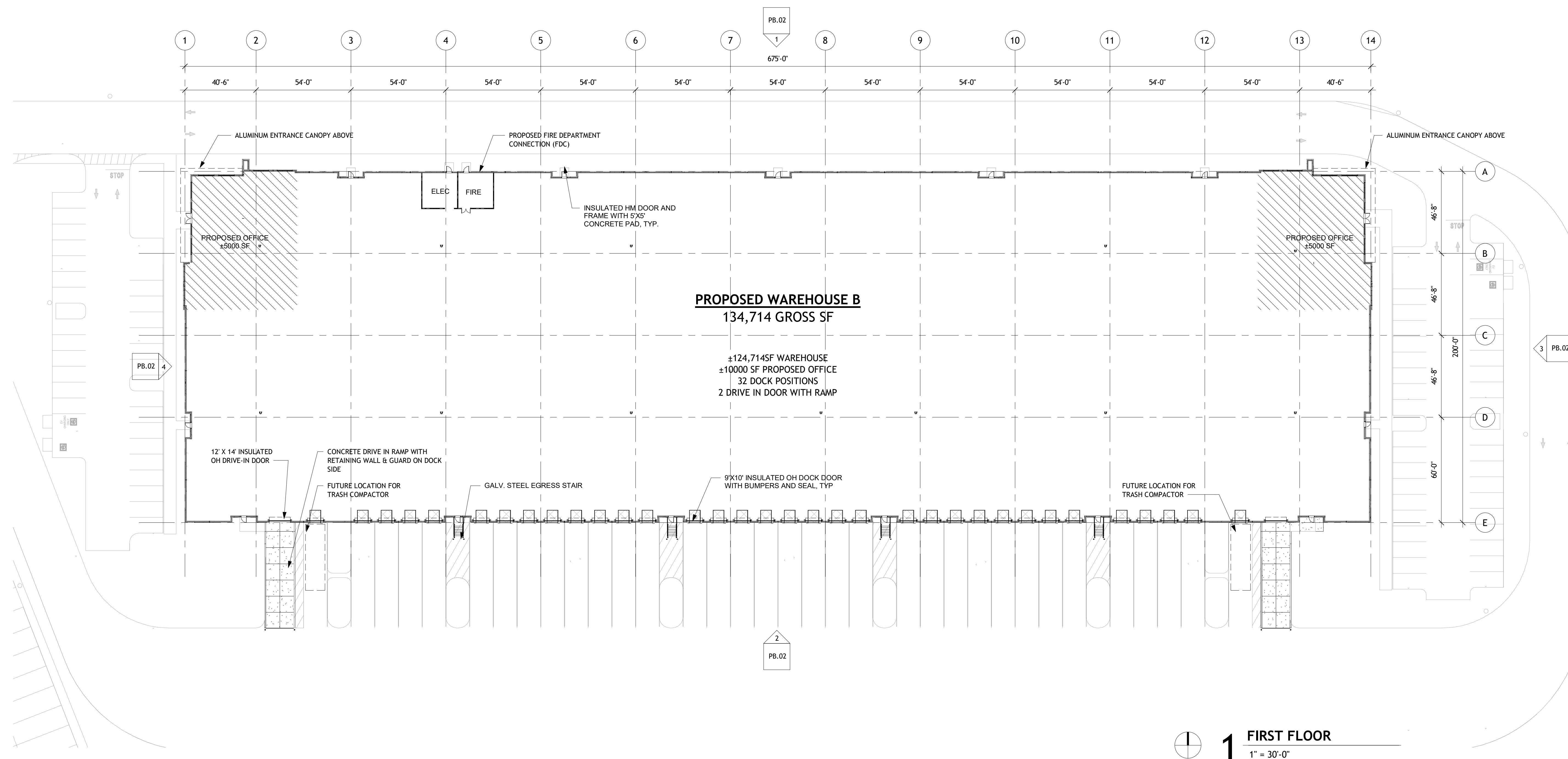
The Professional Architect's seal affixed to this sheet indicates that the named Architect has prepared or directed the preparation of the material shown only on this sheet. Other drawings and documents not exhibiting this seal shall not be considered prepared by or the responsibility of the undersigned.

REVISION:		
REV 1 PLANNING BOARD COMMENTS	01-18-2022	
REV 2	05-16-2022	
REV 3	06-20-2022	

Sheet Issue Date:	01.18.22
Job Number:	21105
Drawn By:	BA
Checked By:	TM
Drawing Title:	

BUILDING B  
OVERALL FLOOR PLAN

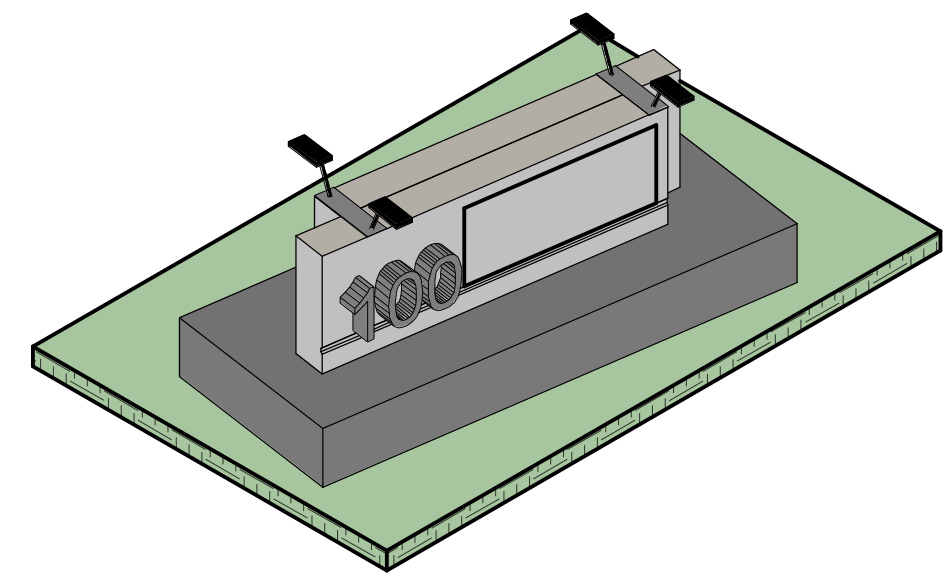
**PB.01**



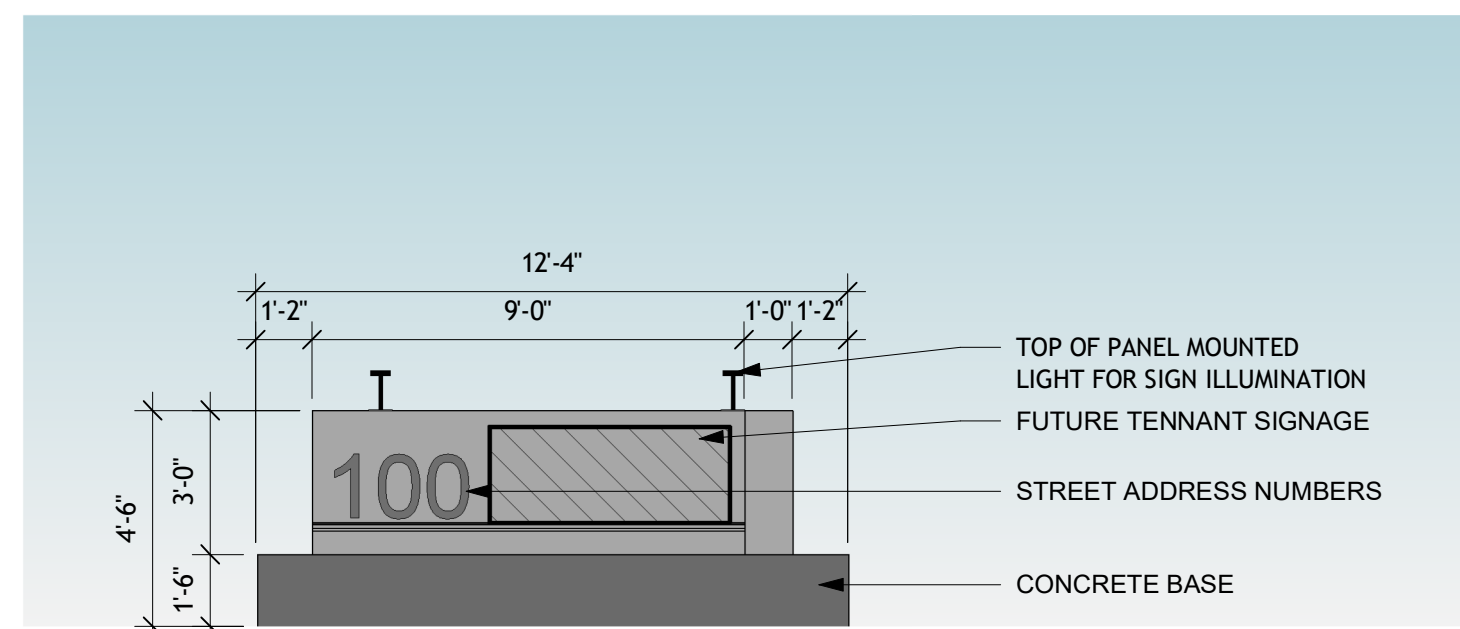
**1 FIRST FLOOR**  
1" = 30'-0"

**MATERIALS LEGEND**

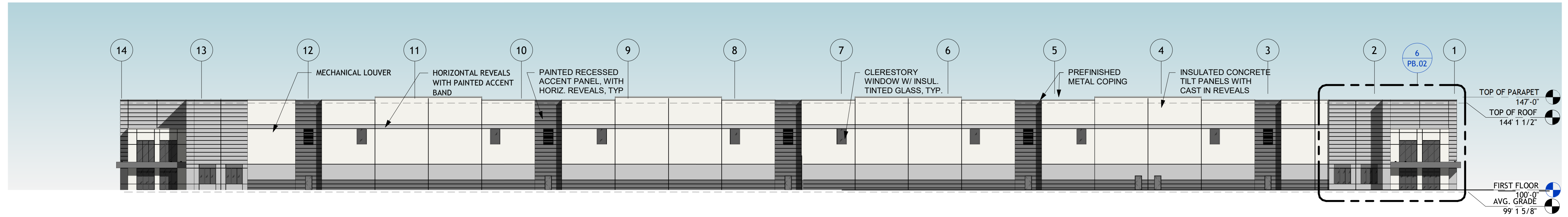
PAINTS	
	PT-1 LIGHT GRAY
	PT-2 MEDIUM GRAY
	PT-3 DARK GRAY
ALUMINUM FRAMING	
	AL-1 (CLEAR ANODIZED STOREFRONT)
	ACM-1 (ALUMINUM ENTRANCE CANOPIES)
GLASS AND GLAZING	
	VISION GLASS
	SPANDREL GLASS



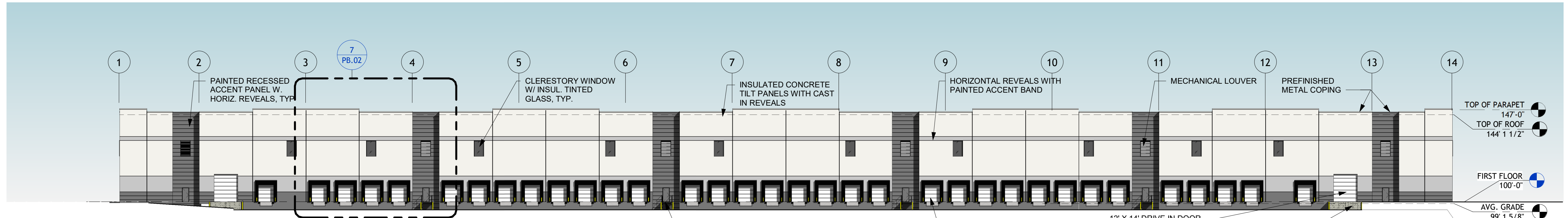
**8 3D MONUMENT SIGN**



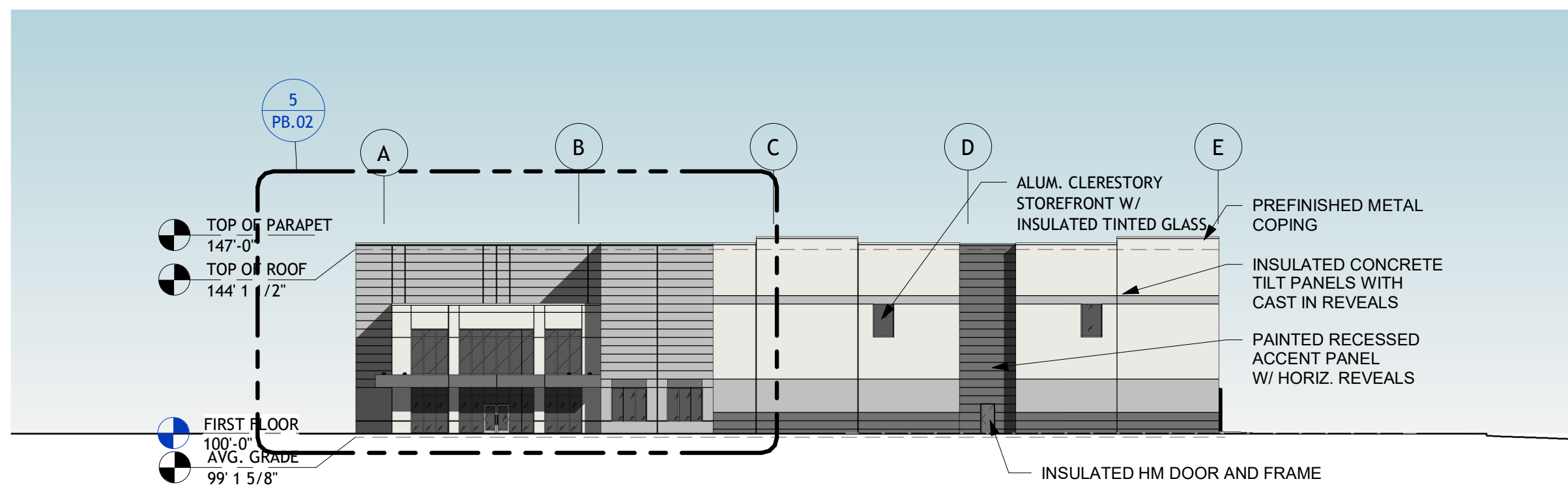
**9 MONUMENT SIGN ELEVATION**  
1/4" = 1'-0"



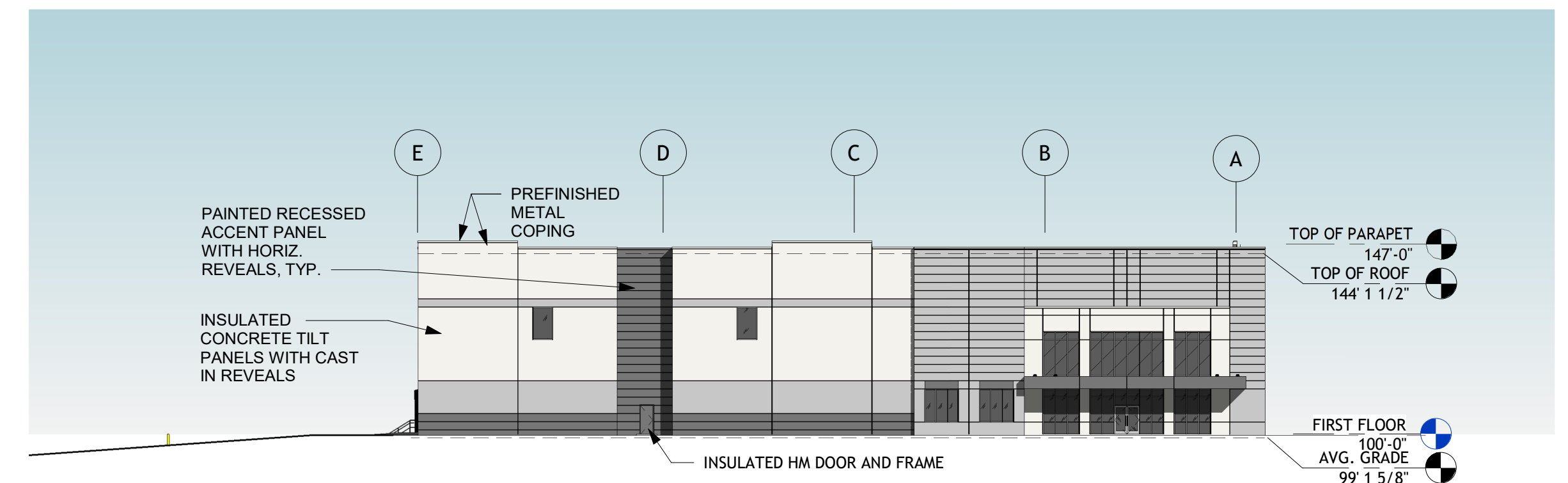
**1 NORTH ELEVATION.**  
1" = 30'-0"



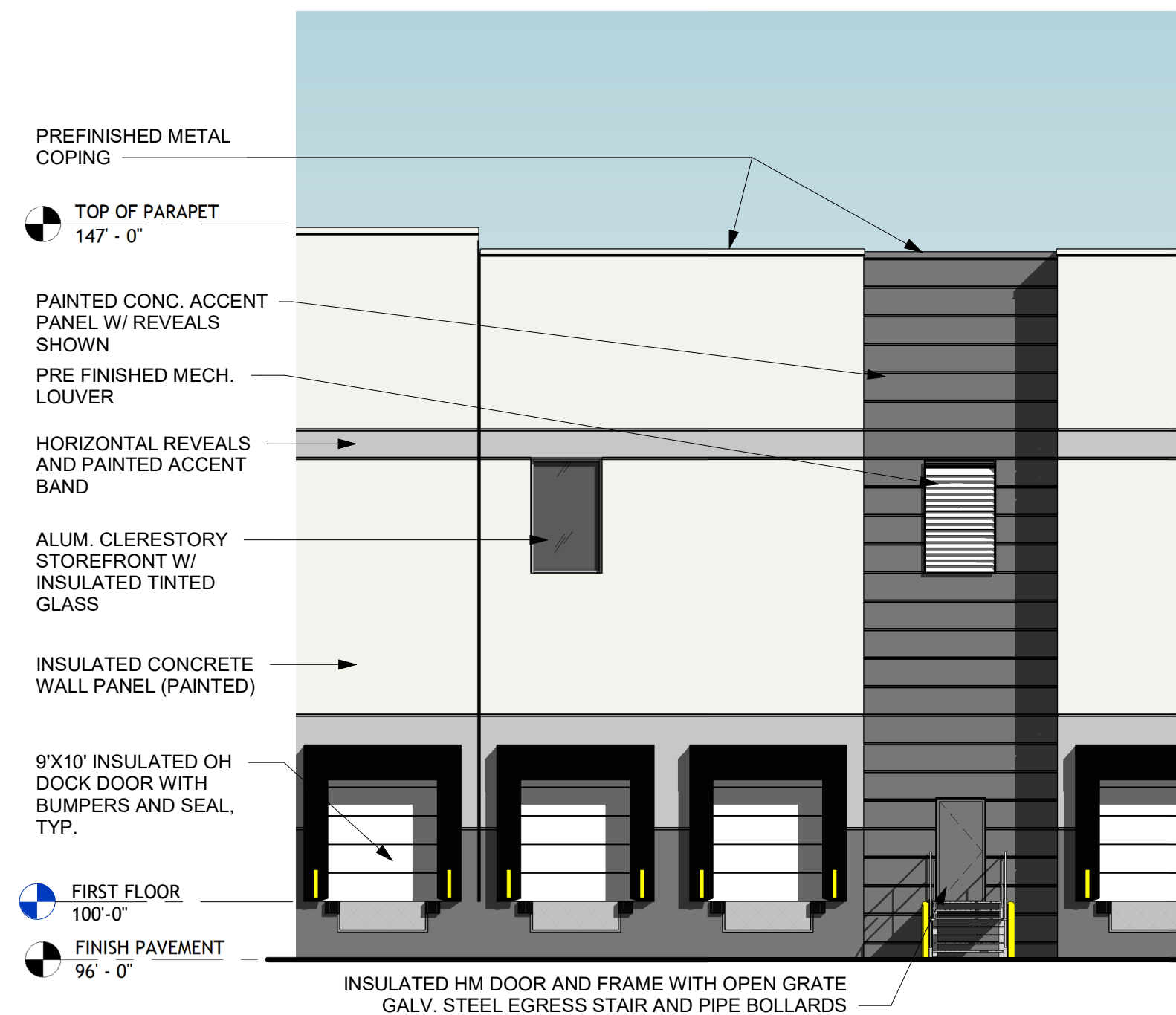
**2 SOUTH ELEVATION.**  
1" = 30'-0"



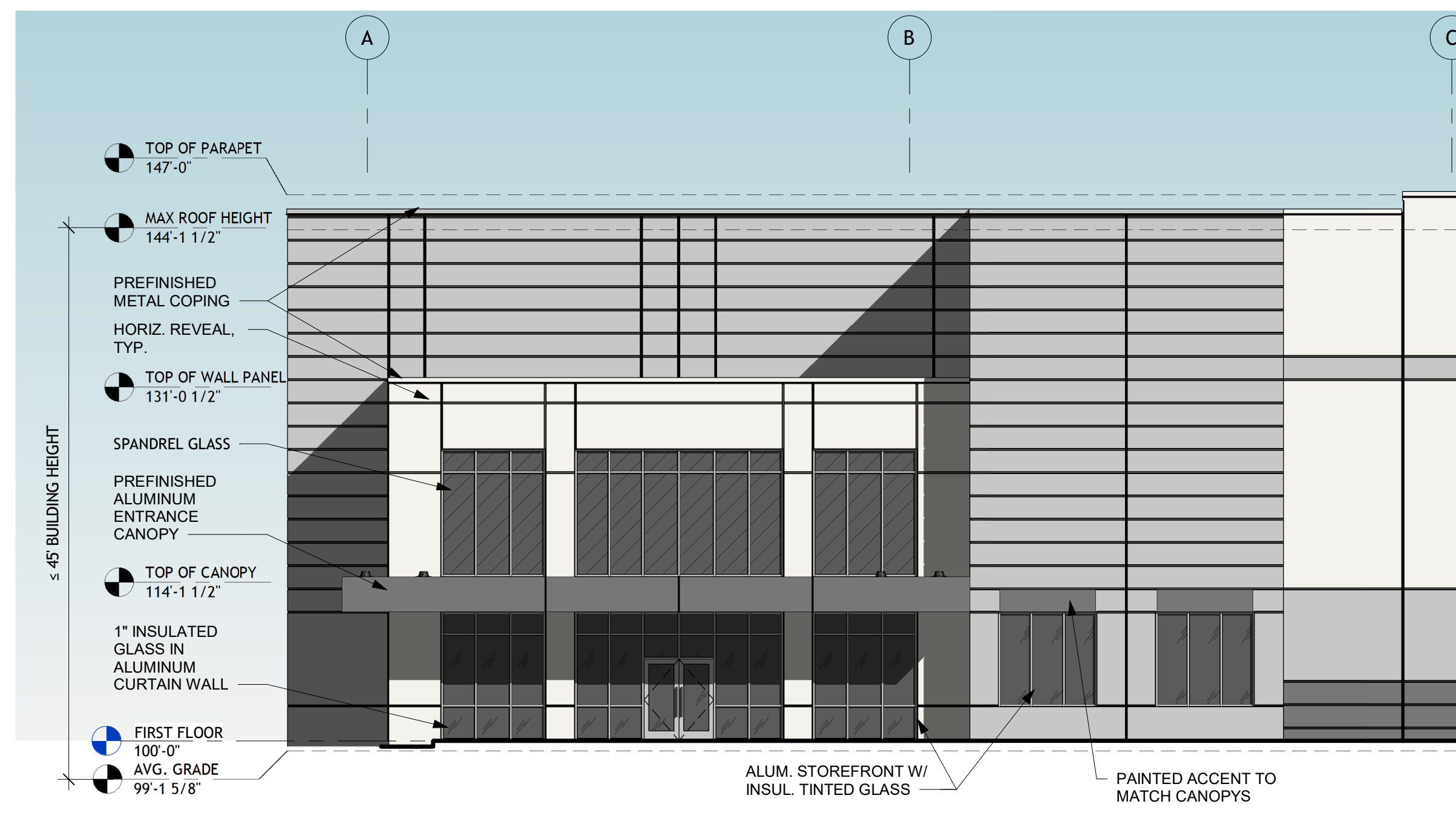
**4 WEST ELEVATION.**  
1" = 30'-0"



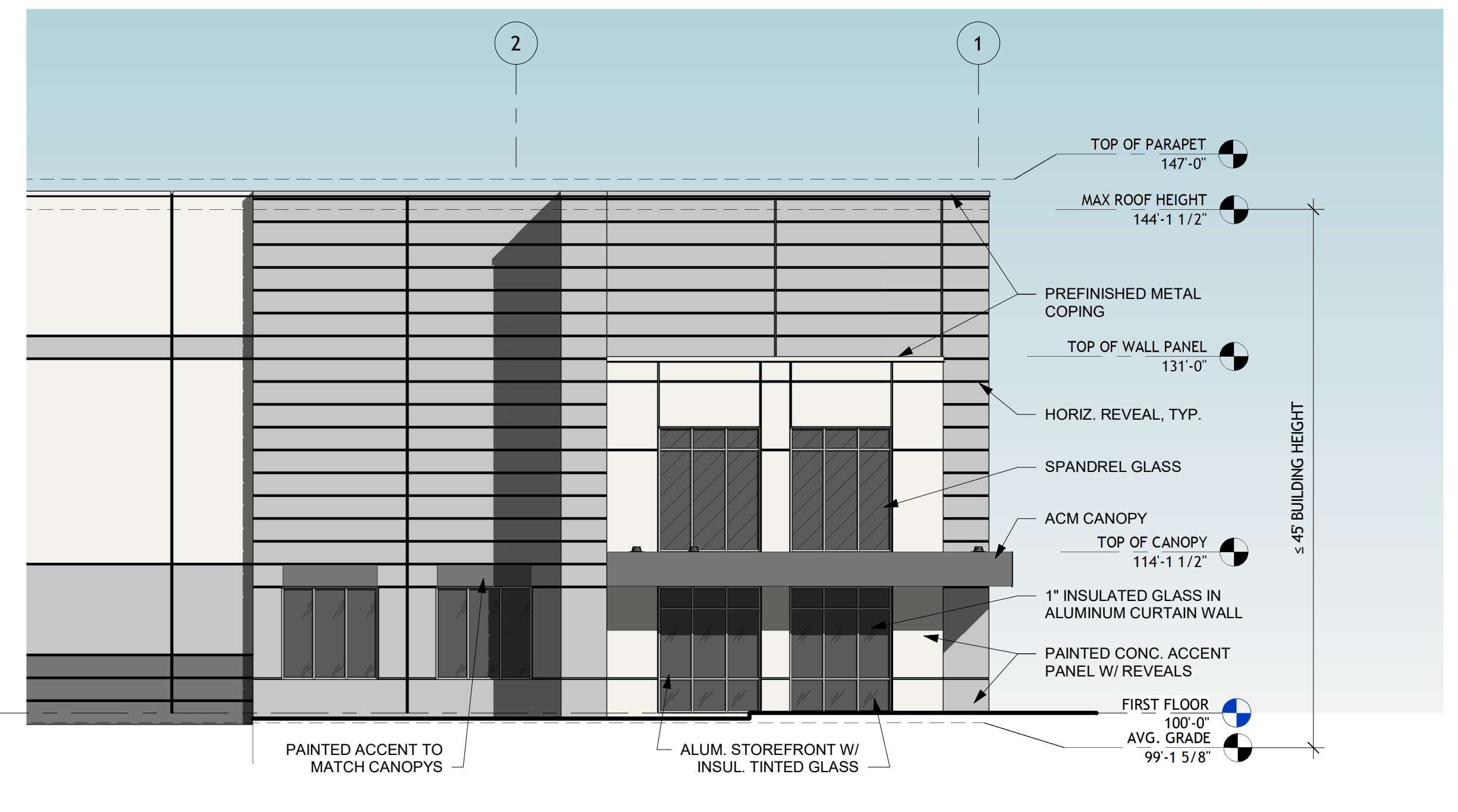
**3 EAST ELEVATION.**  
1" = 30'-0"



**7 ENLARGED DOCK ELEVATION**  
1" = 10'-0"



**5 ENLARGED ENTRANCE ELEVATION - SOUTH.**  
1" = 10'-0"



**6 ENLARGED ENTRANCE ELEVATION - EAST.**  
1" = 10'-0"

REVISION:	DATE:
REV 1 PLANNING BOARD COMMENTS	01-18-2022
REV 2	05-16-2022
REV 3	06-20-2022

Sheet Issue Date:	01.18.22
Job Number:	21105
Drawn By:	BA
Checked By:	TM
Drawing Title:	

BUILDING B  
BUILDING ELEVATIONS