

AASTHW PROPERTY, LLC

BLOCK 168: LOTS 17, 18, 19, 02, 19, 04, & 19, 08
308 & 413 FAIRFIELD RD., TOWNSHIP OF HOWELL
MONMOUTH COUNTY, NEW JERSEY

Licensee Name: Sean Naeger
Discipline: Registered Architect
License Registration No.: 21A02179200
Registration Expires: 7/31/2023

06.29.22

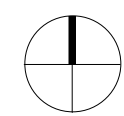
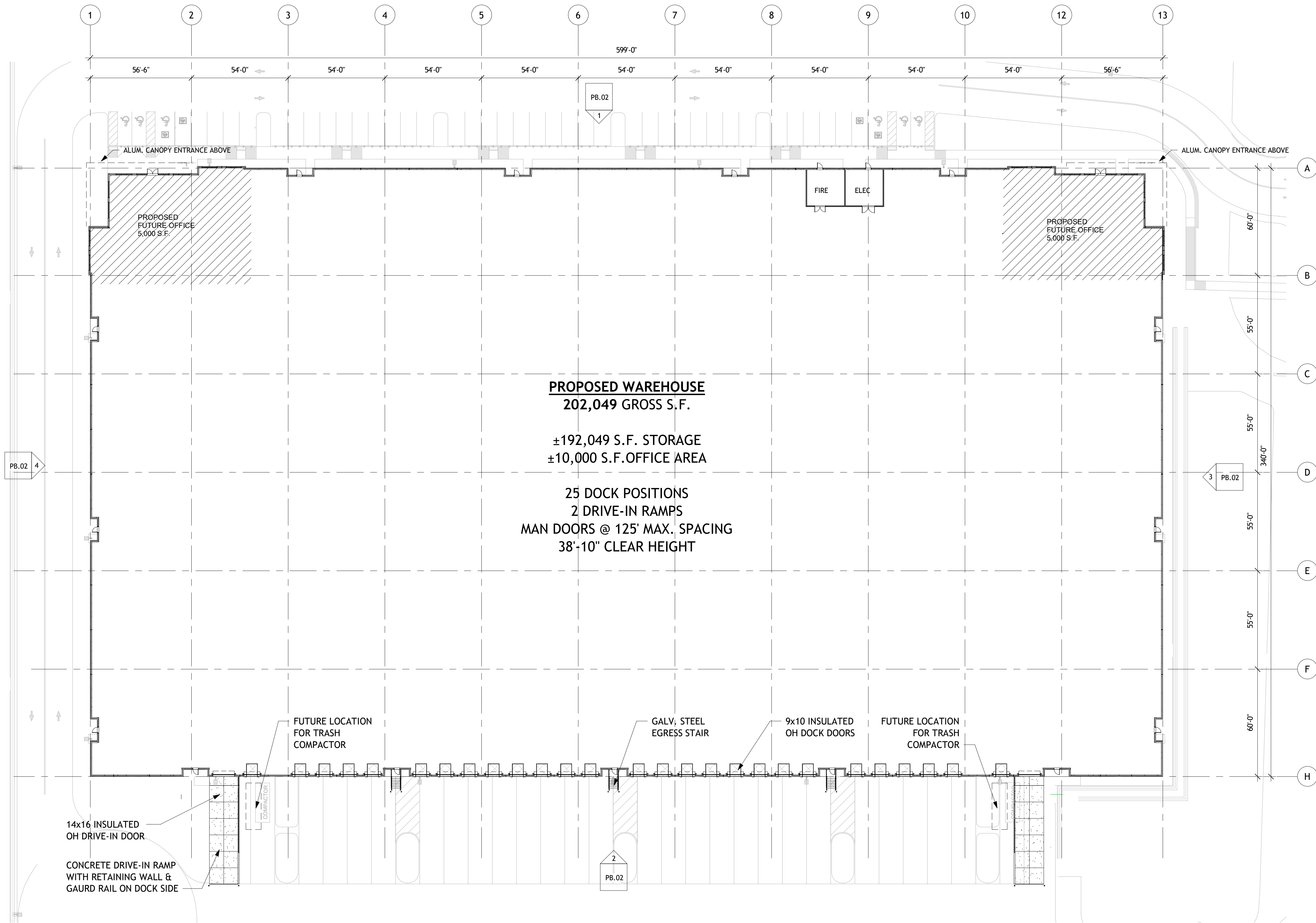
The Professional Architect's seal affixed to this sheet indicates that the named Architect has prepared or directed the preparation of the material shown only on this sheet. Other drawings and documents not exhibiting this seal shall not be considered prepared by or the responsibility of the undersigned.

REVISION:		
REV 1 - ENGINEERING	3.4.2022	
REVIEW #1 COMMENTS		
REV 2	5.16.2022	
REV 3	6.29.2022	

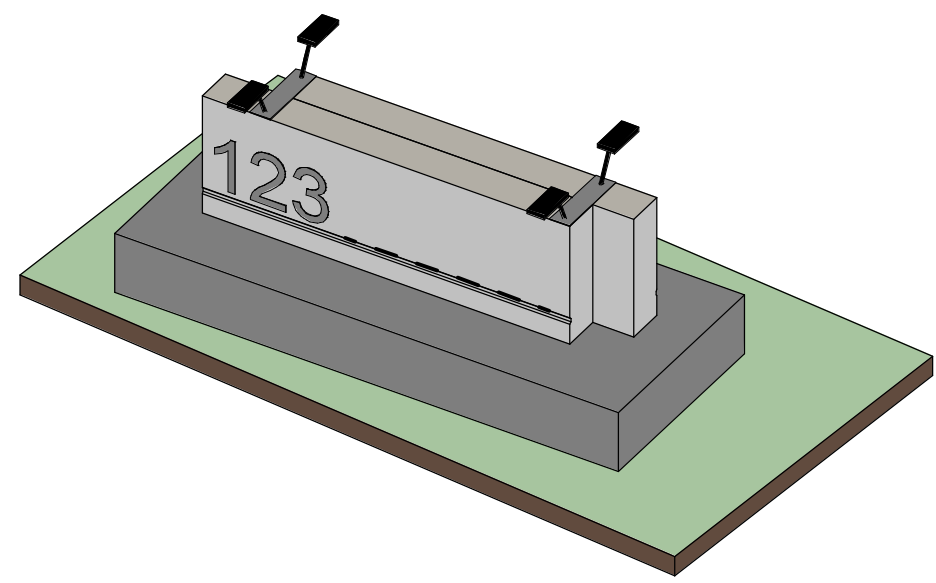
Sheet Issue Date:	-
Job Number:	21088
Drawn By:	BA
Checked By:	TM
Drawing Title:	

OVERALL FLOOR PLAN

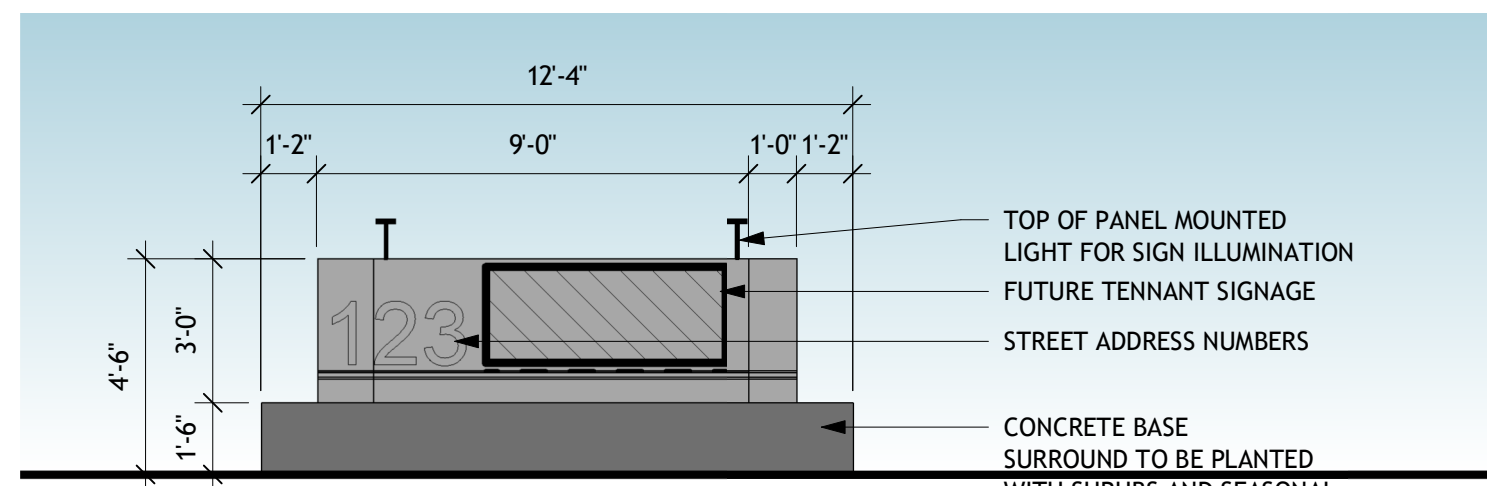
PB.01



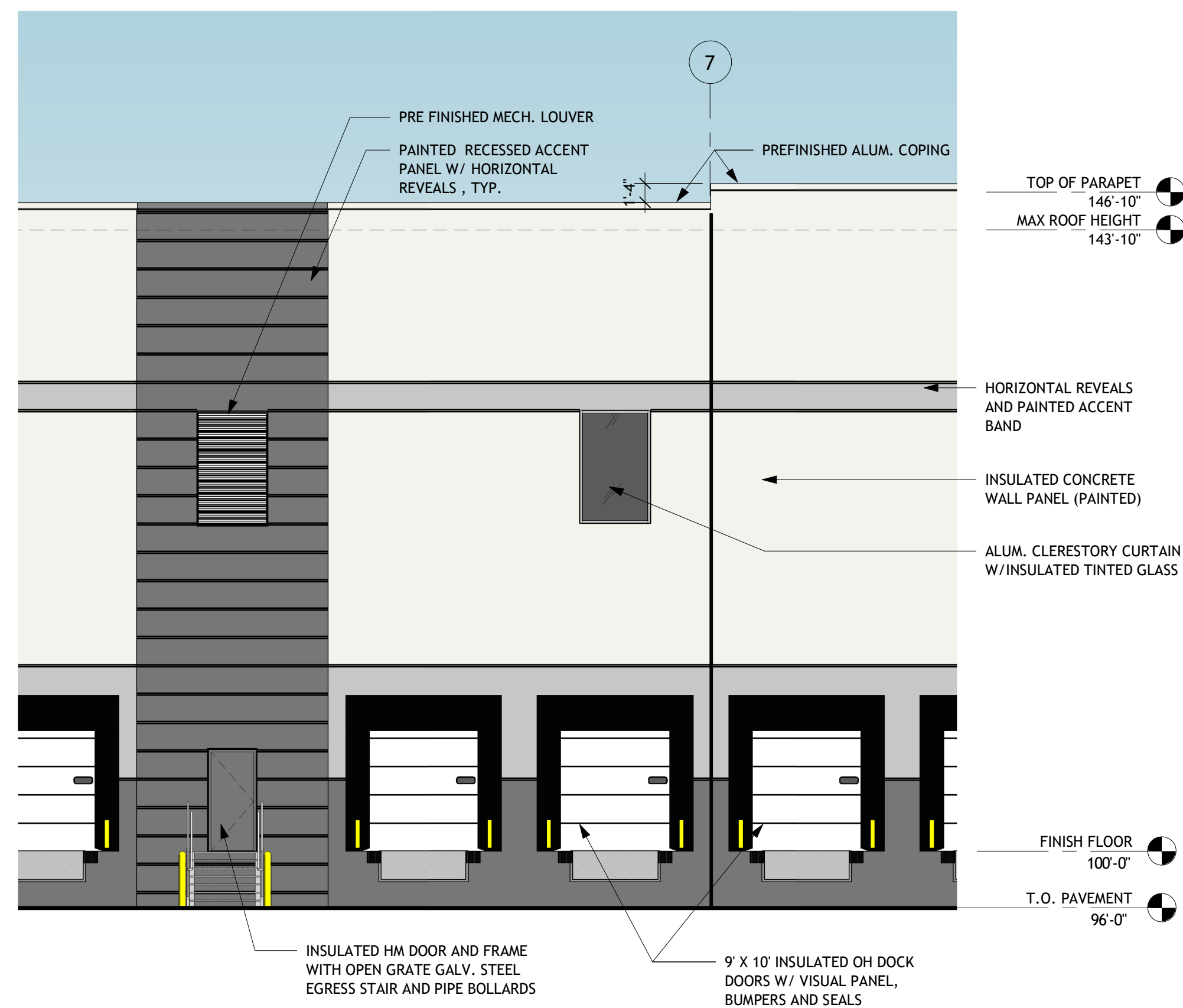
1 FLOOR PLAN
1" = 30'-0"



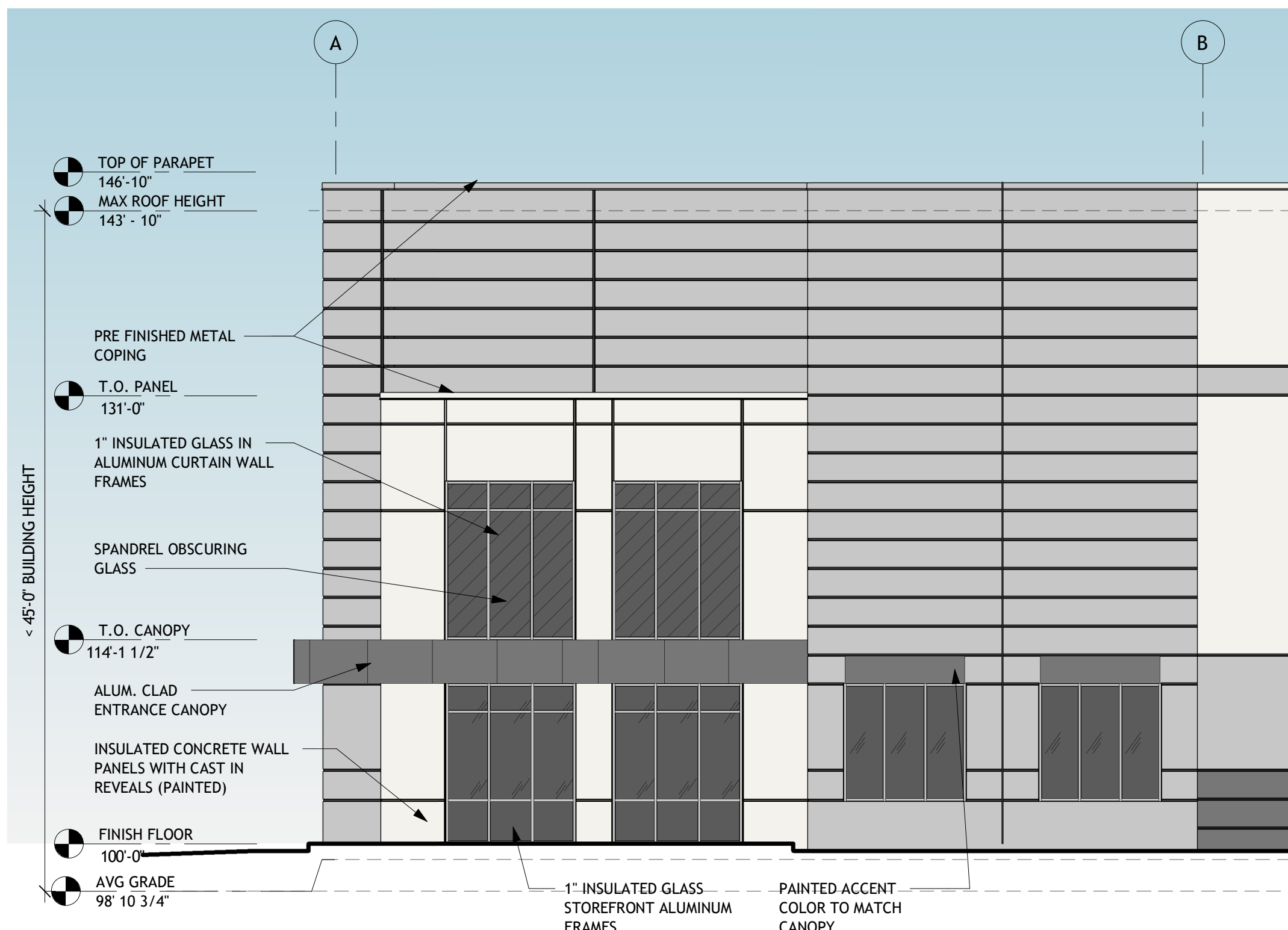
9 3D MONUMENT SIGN



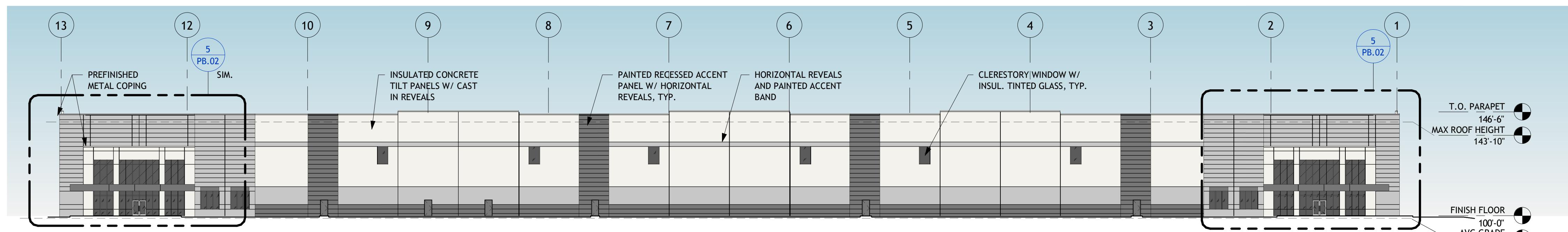
8 MONUMENT SIGN
1/4" = 1'-0"



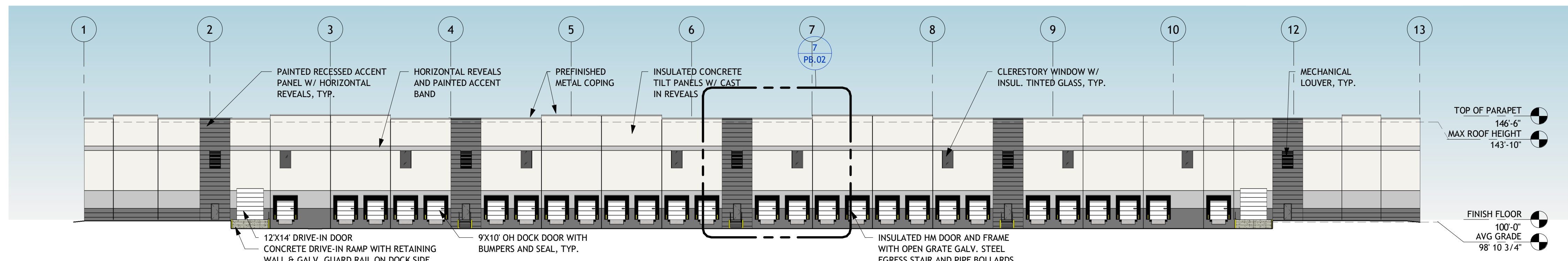
7 ENLARGED DOCK ELEVATION
1/8" = 1'-0"



6 ENLARGED OFFICE ELEVATION
1/8" = 1'-0"



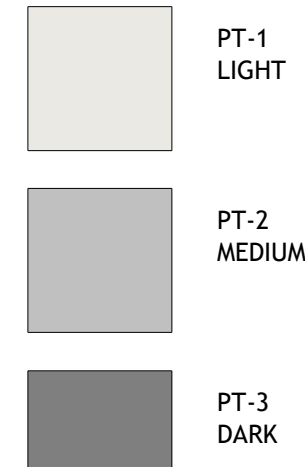
1 NORTH ELEVATION
1" = 30'-0"



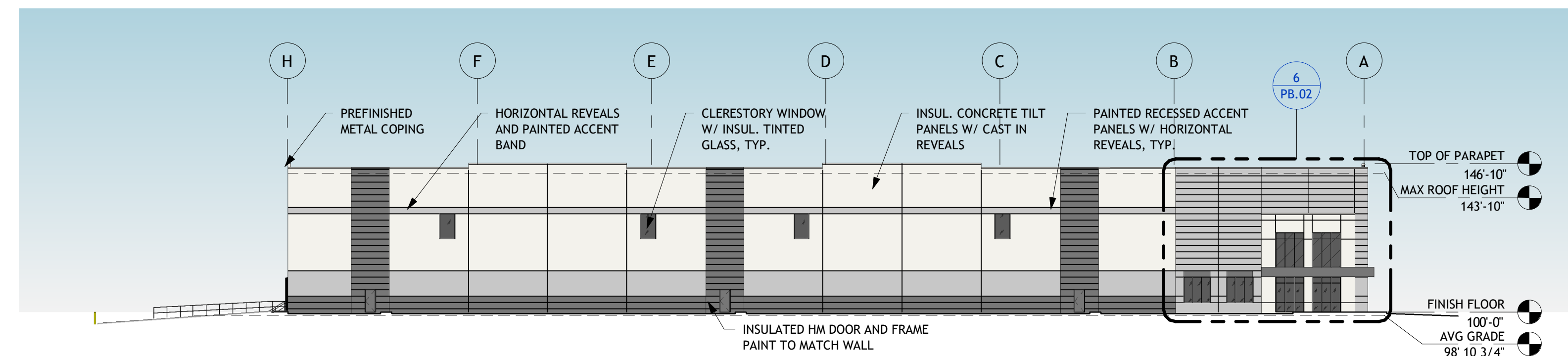
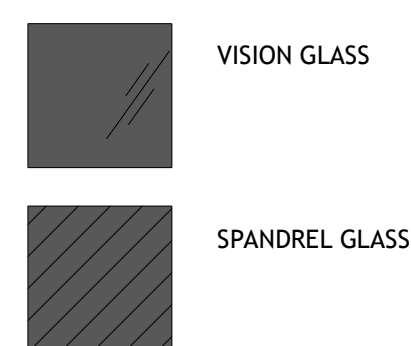
2 SOUTH ELEVATION
1" = 30'-0"

BUILDING AND MONUMENT SIGN MATERIALS LEGEND

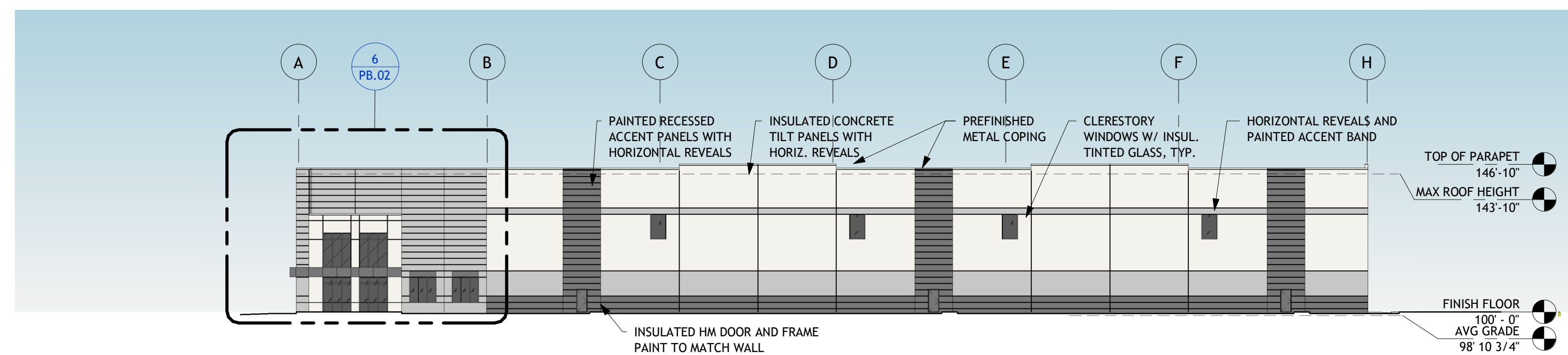
PAINTED CONCRETE WALL PANELS



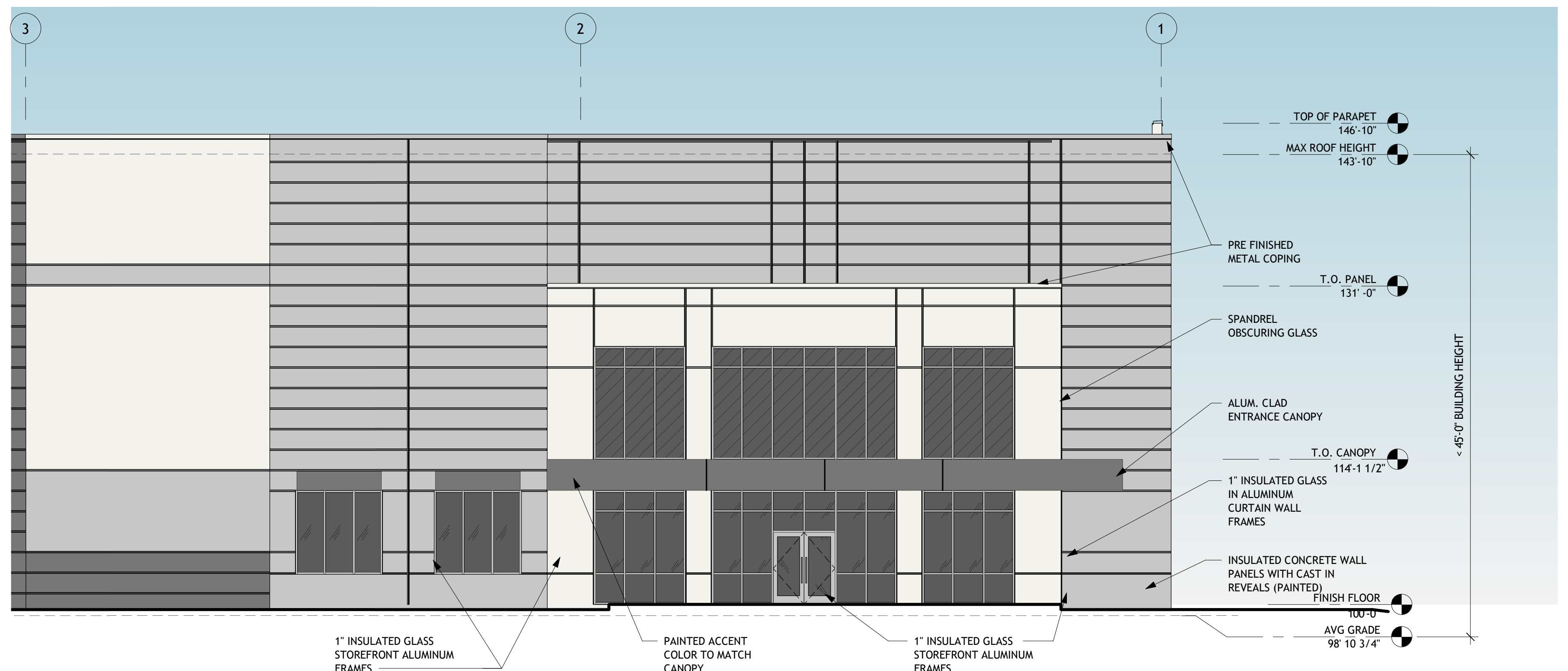
GLASS AND GLAZING



3 EAST ELEVATION
1" = 30'-0"



4 WEST ELEVATION
1" = 30'-0"



5 ENLARGED ENTRANCE ELEVATION
1/8" = 1'-0"

REVISION:	
REV 1 - ENGINEERING	3.4.2022
REVIEW #1 COMMENTS	
REV 2	5.16.2022
REV 3	6.29.2022

Sheet Issue Date:	-
Job Number:	21088
Drawn By:	BA
Checked By:	TM
Drawing Title:	

BUILDING ELEVATIONS