

ACTIVE 29 HOWELL ROAD - BLDG B

BLOCK 164, LOT 5.01
TOWNSHIP OF HOWELL MONMOUTH COUNTY, NEW JERSEYLicensee Name: SEAN D. NAEGER
Discipline: Registered Architect
License Registration No.: 21A02179200
Registration Expires: 07/31/23*Sean D. Naeger*

8/18/2022

The Professional Architect's seal affixed to this sheet indicates that the named Architect has prepared or directed the preparation of the material shown only on this sheet. Other drawings and documents not exhibiting this seal shall not be considered prepared by or the responsibility of the undersigned.

| REVISION: | | |
|-----------|--------------------|-----------|
| 1 | TRC COMMENTS | 8.16.2021 |
| 2 | PB REVIEW COMMENTS | 10.1.2021 |
| 3 | REV 3 | 8.18.2022 |

Sheet Issue Date:

Job Number: 20066.20

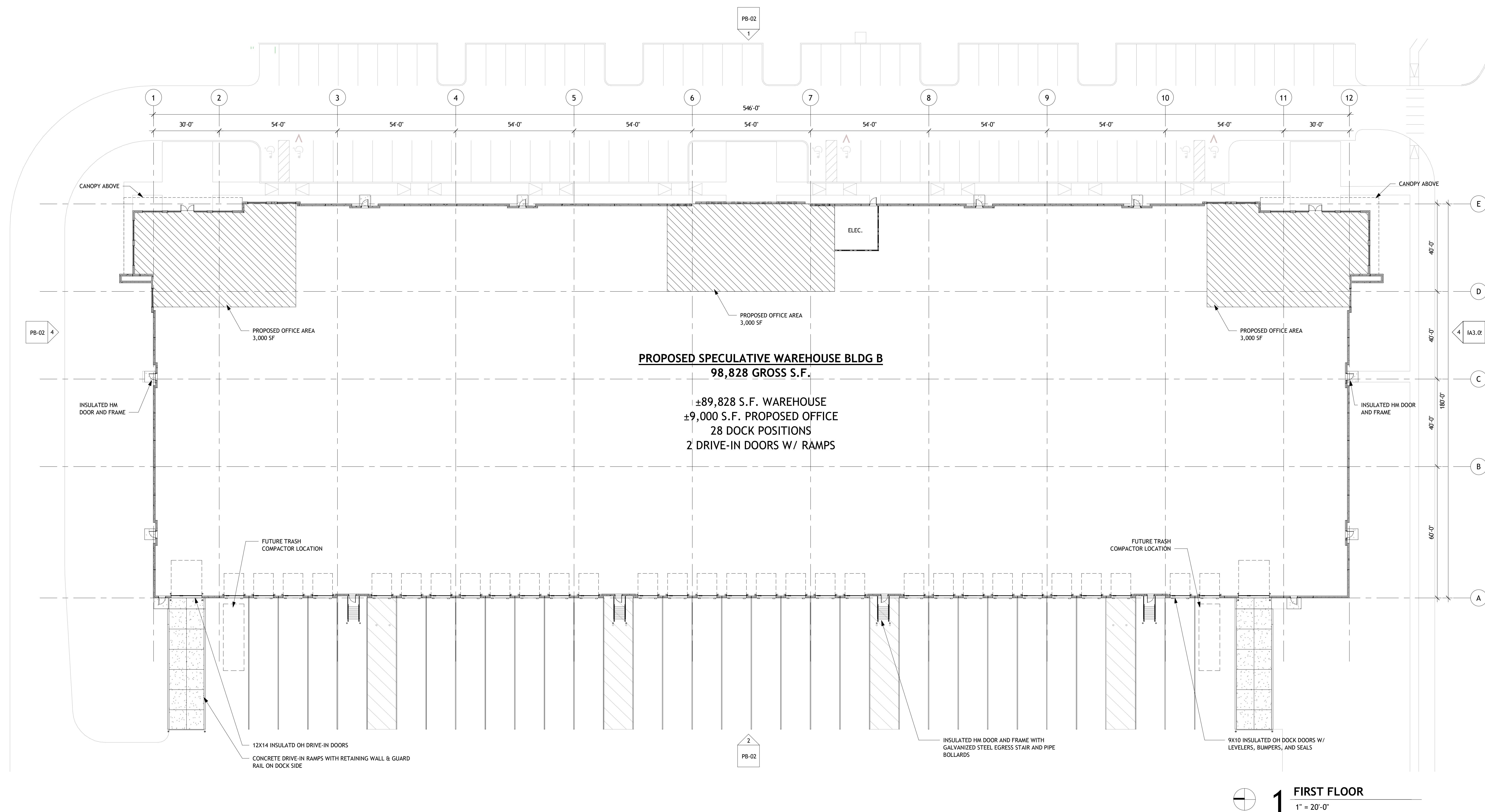
Drawn By: ST, KW

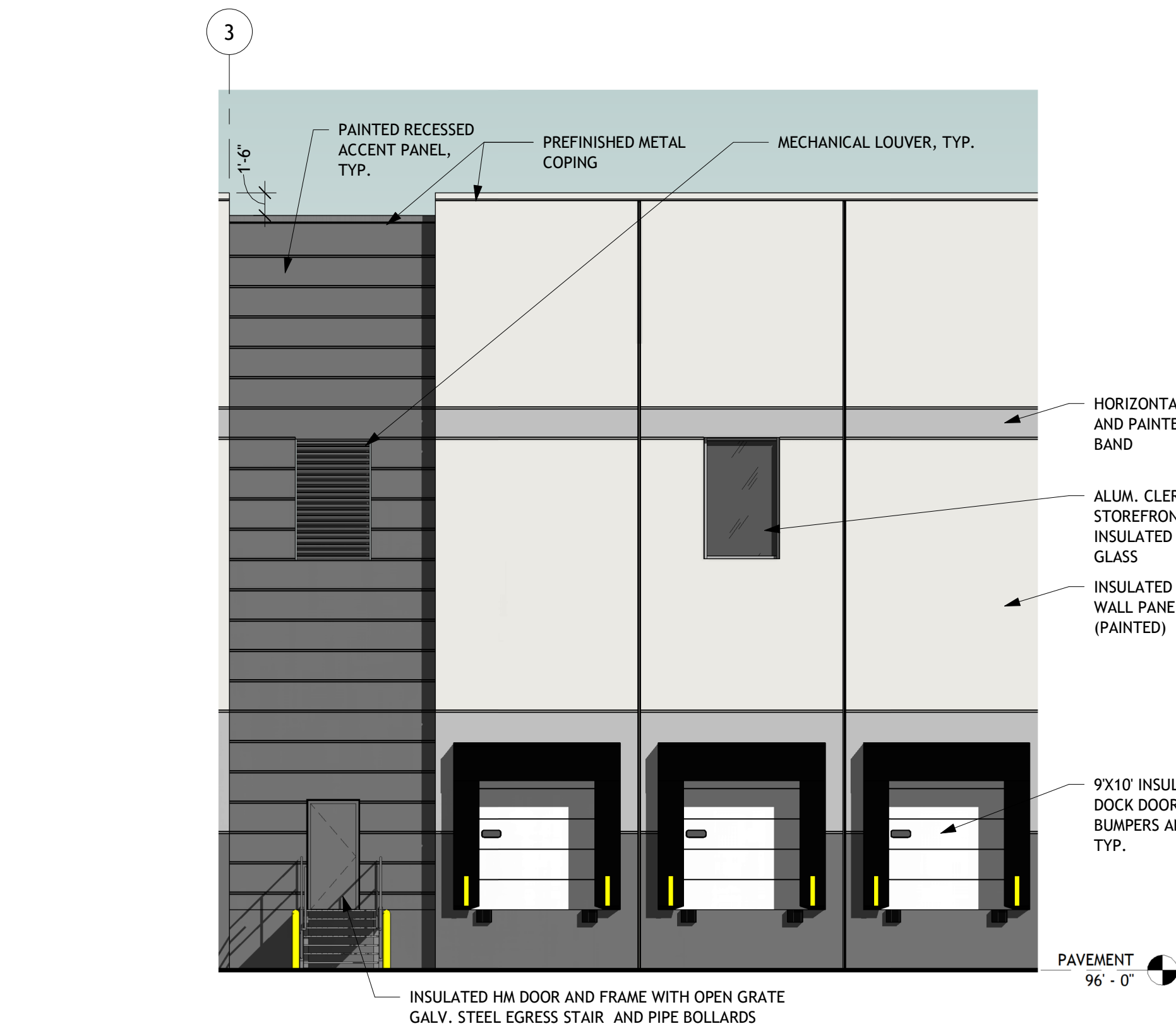
Checked By: TM

Drawing Title:

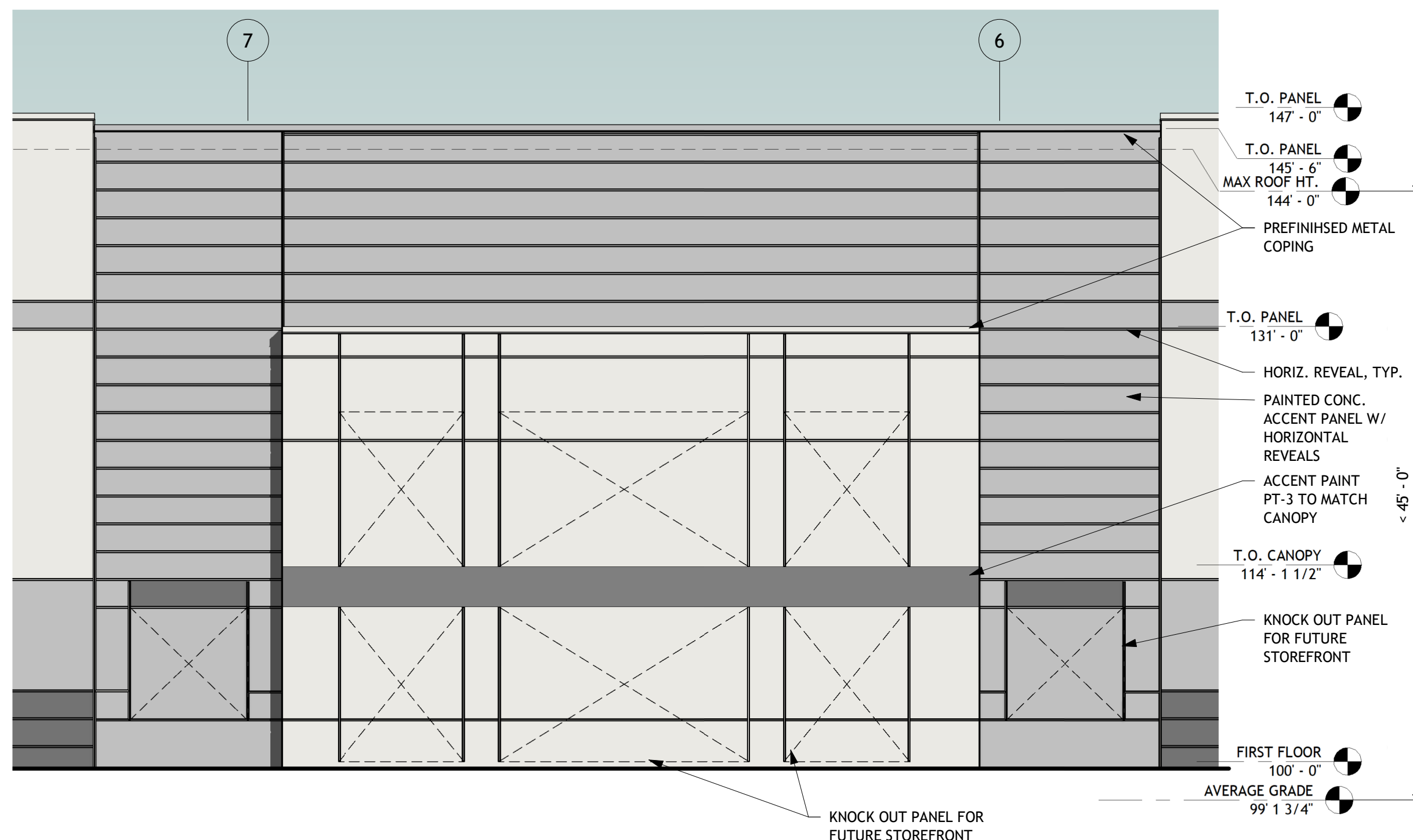
BUILDING B OVERALL
FLOOR PLAN

PB-01

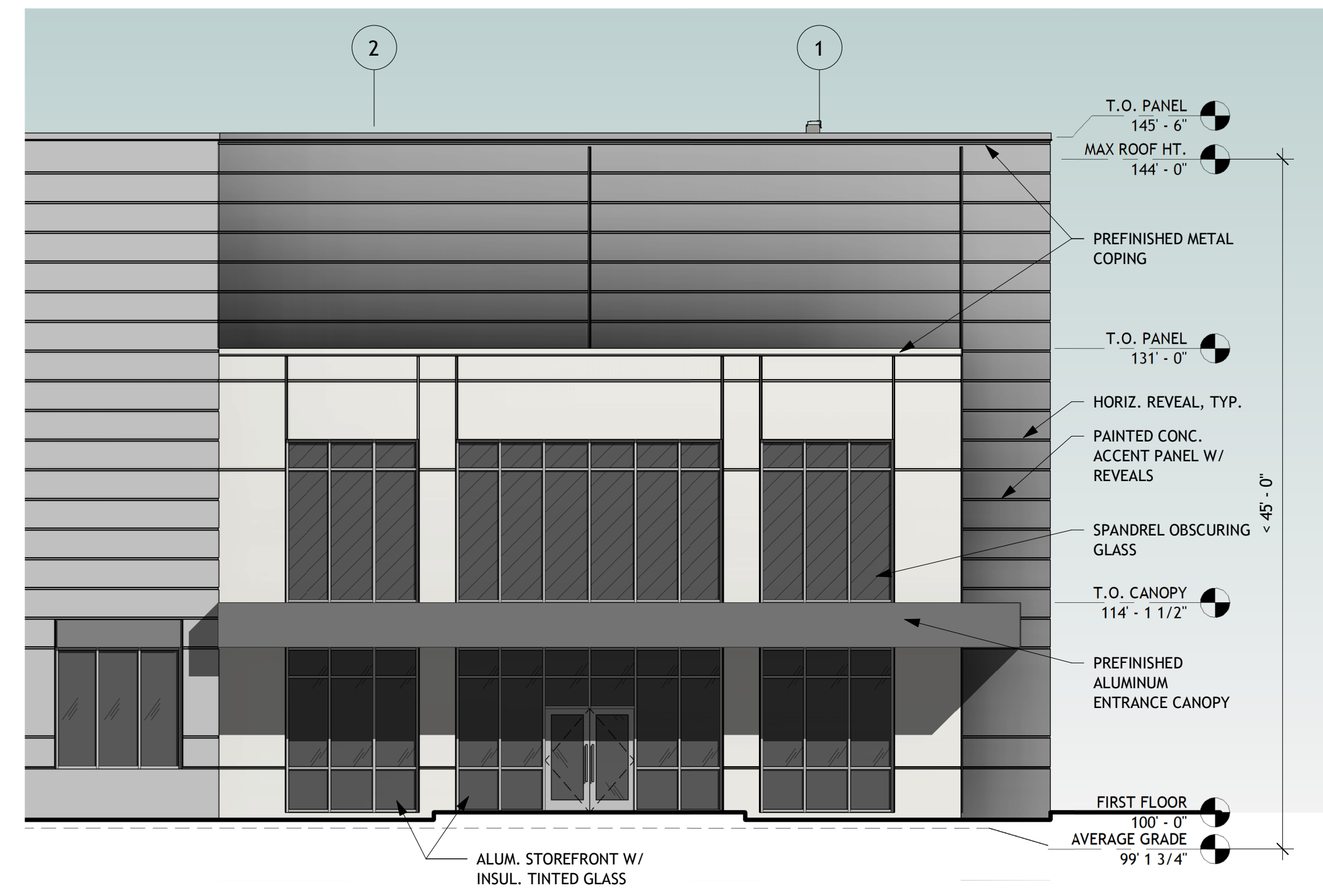
1 FIRST FLOOR
1" = 20'-0"



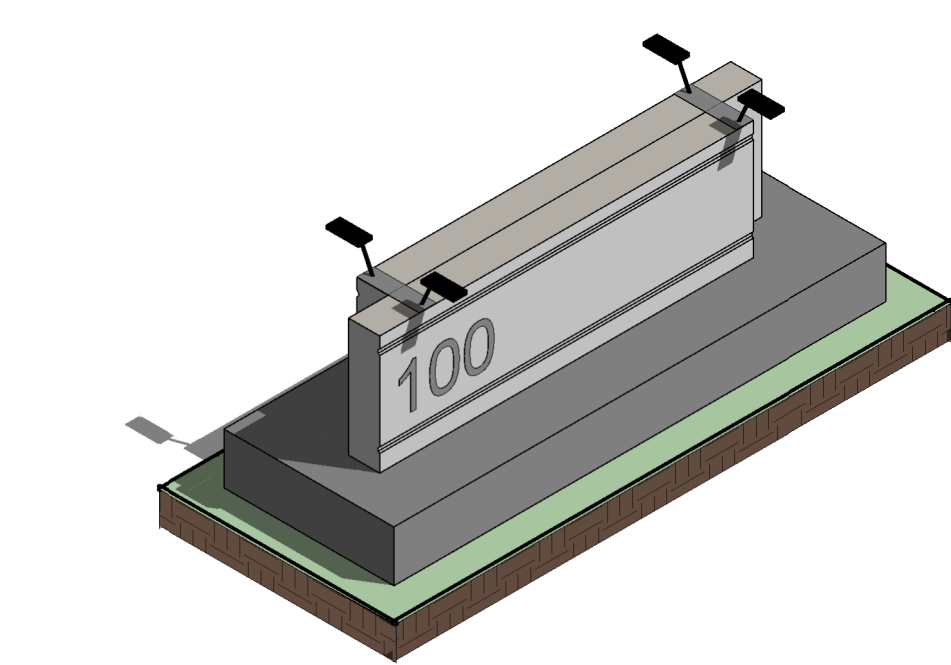
7 ENLARGED DOCK ELEVATION
1/8" = 1'-0"



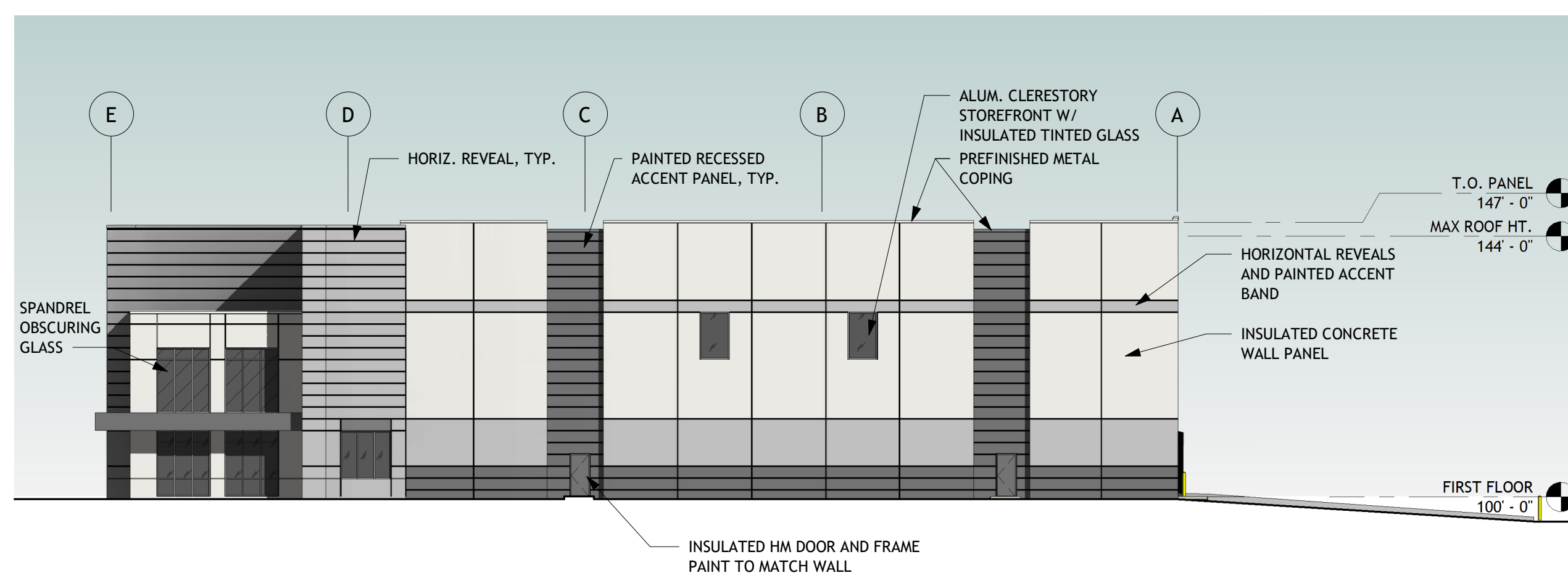
6 WEST ELEVATION - FUTURE OFFICE
1/8" = 1'-0"



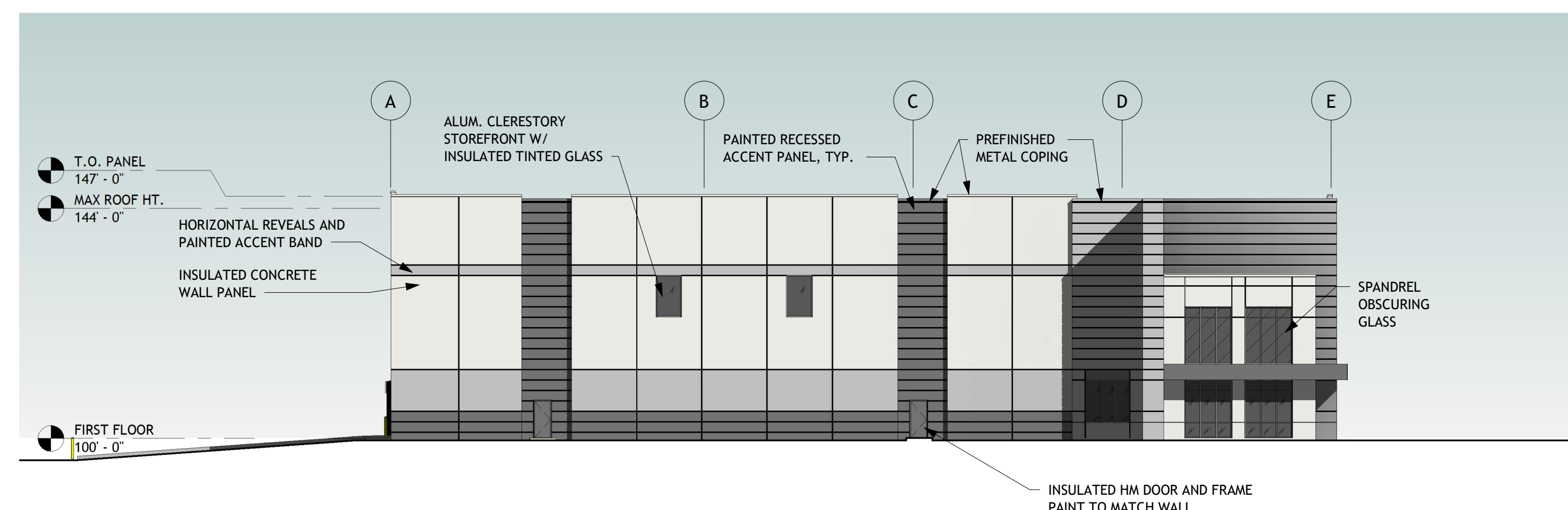
5 ENLARGED OFFICE ELEVATION
1/8" = 1'-0"



8 MONUMENT ELEVATION
1/4" = 1'-0"



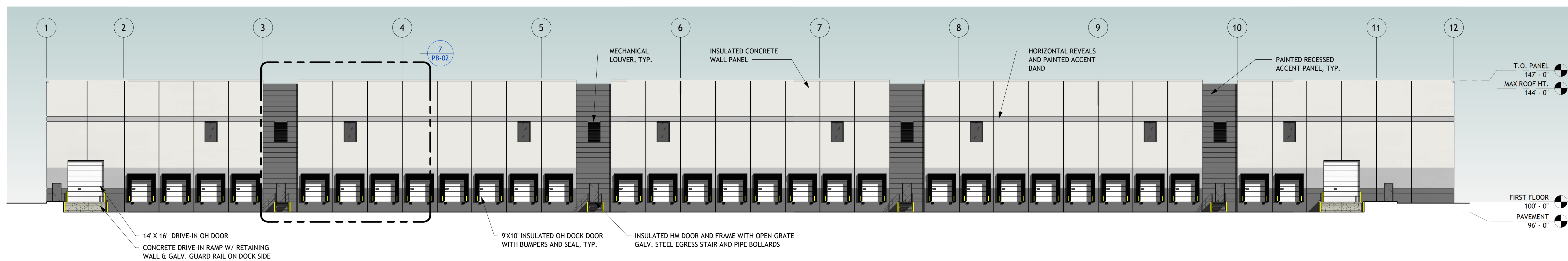
4 SOUTH ELEVATION
1" = 20'-0"



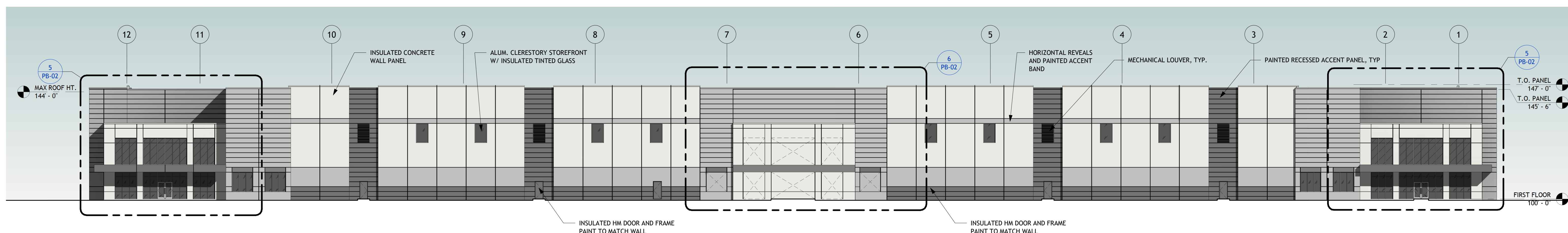
3 NORTH ELEVATION
1" = 20'-0"

MATERIALS LEGEND

| PAINTED CONCRETE WALL PANELS | GLASS AND GLAZING |
|------------------------------|-------------------|
| PT-1 LIGHT GRAY | VISION GLASS |
| PT-2 MEDIUM GRAY | SPANDREL GLASS |
| PT-3 DARK GRAY | |



2 EAST ELEVATION
1" = 20'-0"



1 WEST ELEVATION
1" = 20'-0"

ACTIVE 29 HOWELL ROAD - BLDG A

BLOCK 164, LOT 5.01
TOWNSHIP OF HOWELL MONMOUTH COUNTY, NEW JERSEY



Licensee Name: SEAN D. NAEGER
Discipline: Registered Architect
License Registration No.: 21A02179200
Registration Expires: 07/31/23

Sean D. Naeger

8/18/2022

The Professional Architect's seal affixed to this sheet indicates that the named Architect has prepared or directed the preparation of the material shown only on this sheet. Other drawings and documents not exhibiting this seal shall not be considered prepared by or the responsibility of the undersigned.

REVISION:

| | | |
|---|--------------------|-----------|
| 1 | TRC COMMENTS | 8.16.2021 |
| 2 | PB REVIEW COMMENTS | 10.1.2021 |
| 3 | REV 3 | 8.18.2022 |

Sheet Issue Date:

Job Number: 20066.10

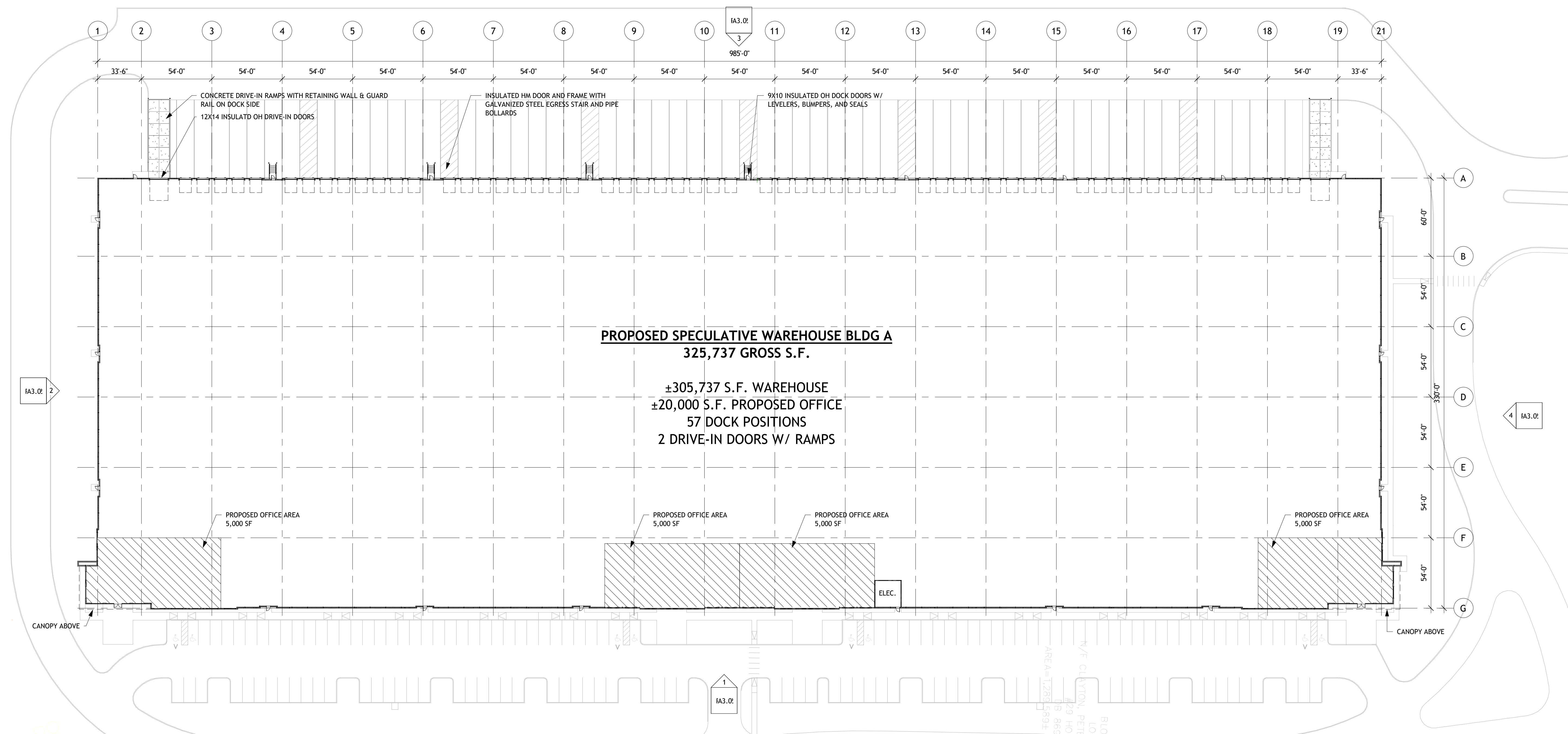
Drawn By: ST, KW

Checked By: TM

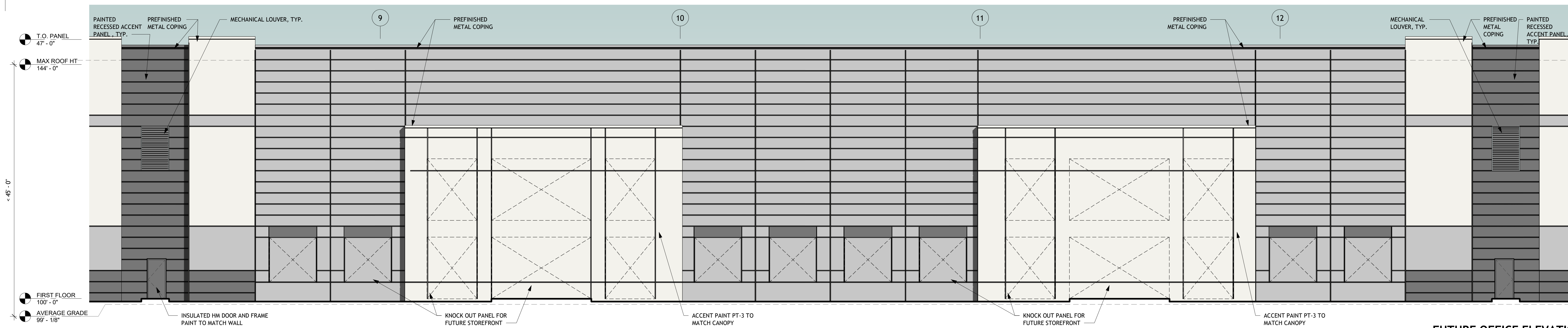
Drawing Title:

BUILDING A OVERALL
FLOOR PLAN

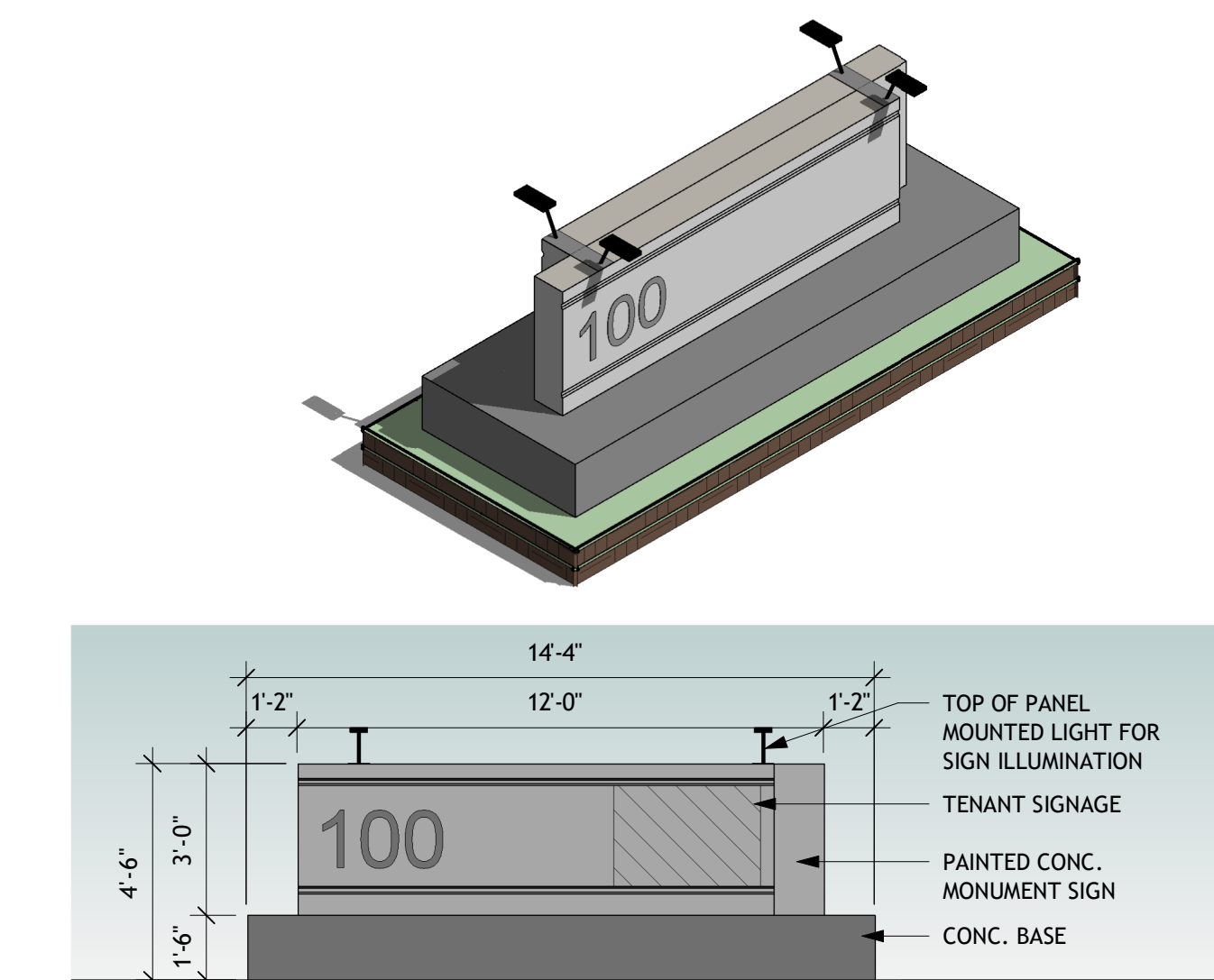
PB-01



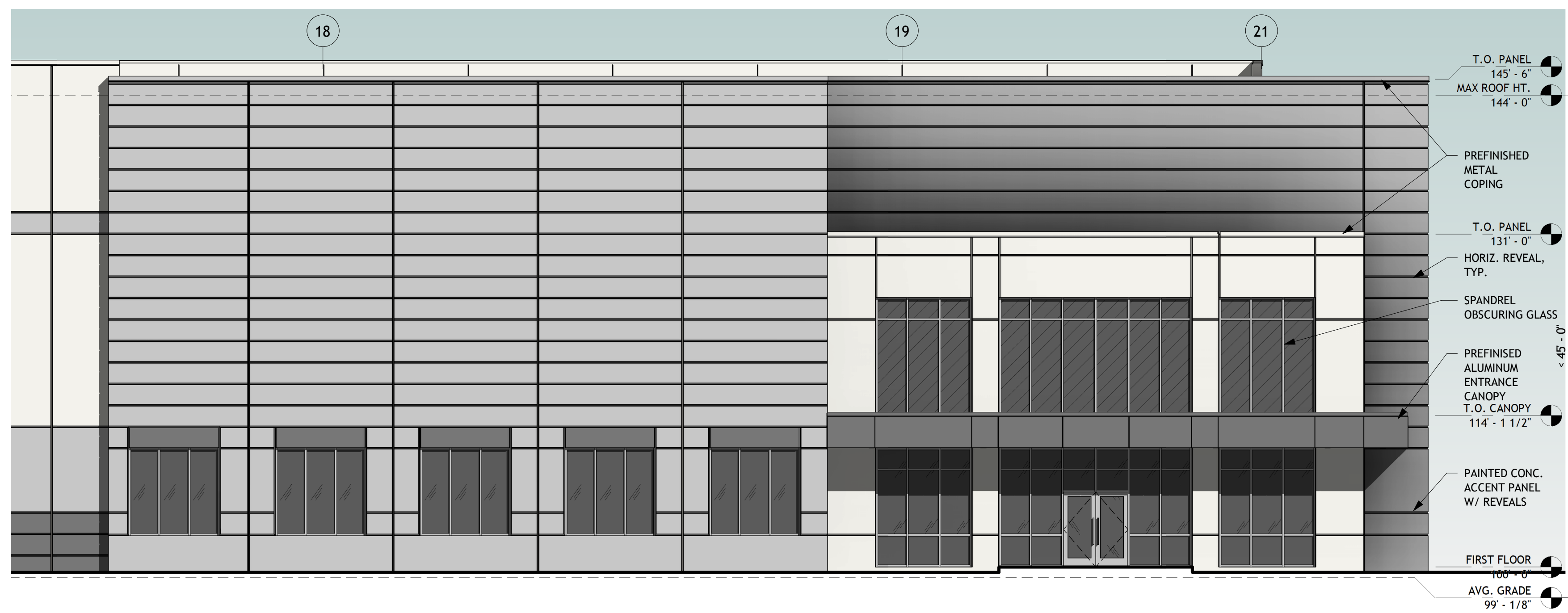
1 FIRST FLOOR
1" = 40'-0"



7 FUTURE OFFICE ELEVATION
1/8" = 1'-0"



8 MONUMENT ELEVATION
1/4" = 1'-0"



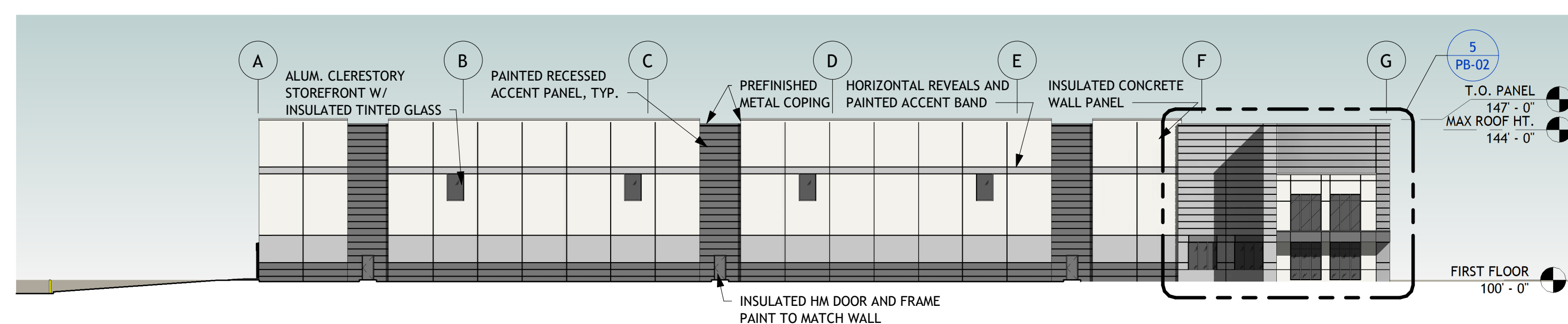
6 ENLARGED OFFICE ELEVATION
1/8" = 1'-0"



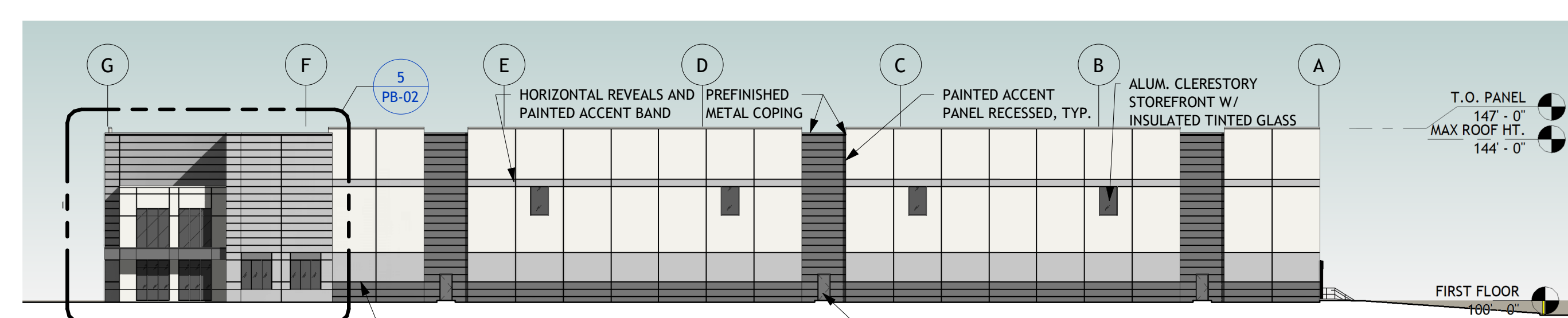
5 ENLARGED OFFICE ELEVATION
1/8" = 1'-0"

MATERIALS LEGEND

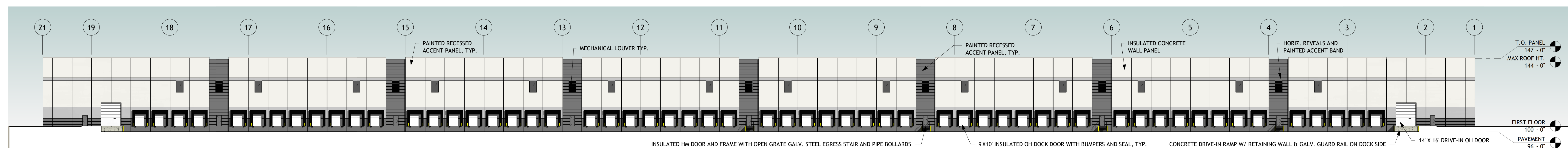
| PAINTED CONCRETE WALL PANELS | GLASS AND GLAZING |
|------------------------------|-------------------|
| PT-1 LIGHT GRAY | VISION GLASS |
| PT-2 MEDIUM GRAY | SPANDREL GLASS |
| PT-3 DARK GRAY | |



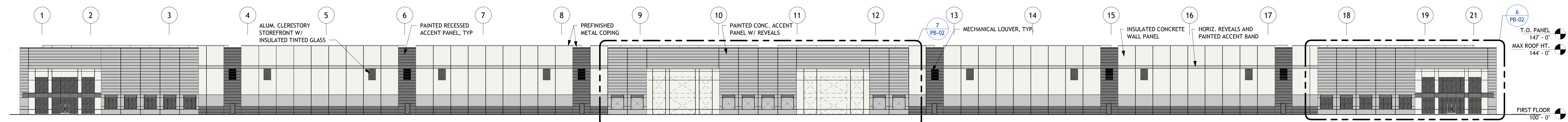
4 WEST ELEVATION
1" = 30'-0"



3 EAST ELEVATION
1" = 30'-0"



2 NORTH ELEVATION
1" = 30'-0"



1 SOUTH ELEVATION
1" = 30'-0"

| REVISION: | | |
|-----------|--------------------|-----------|
| 1 | TRC COMMENTS | 8.16.2021 |
| 2 | PB REVIEW COMMENTS | 10.1.2021 |
| 3 | REV 3 | 8.18.2022 |

| | |
|-------------------|------------|
| Sheet Issue Date: | |
| Job Number: | 20066.10 |
| Drawn By: | ST, KW, BA |
| Checked By: | TM |
| Drawing Title: | |