

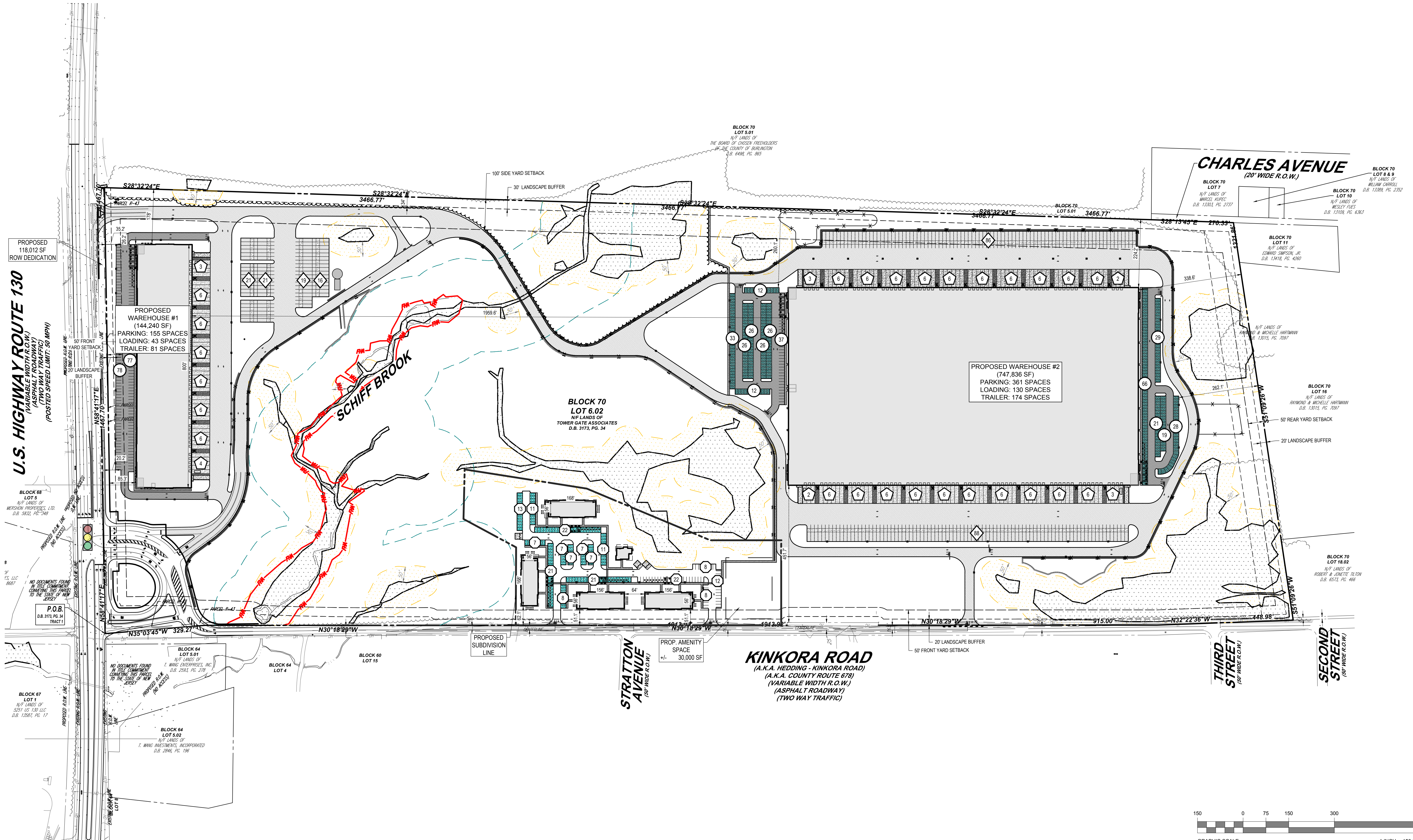


ENVIRONMENTAL CONSTRAINTS LEGEND	
FLOOD HAZARD AREA	FM
150' RIPARIAN BUFFER	
50' WETLANDS TRANSITION AREA	
WETLANDS AREA	

HATCH LEGEND	
	PROP. CONC. WALK
	PROP. HEAVY DUTY CONC. PAVEMENT
	PROP. CONC. PAVEMENT
	PROP. HEAVY DUTY ASPHALT
	PROP. ASPHALT PAVEMENT

PARKING LEGEND	
	PROP. 9.5 FT X 18 FT RESIDENTIAL PASSENGER CAR PARKING STALL
	PROP. 9.5 FT X 18 FT WAREHOUSE PASSENGER CAR PARKING STALL
	PROP. 12 FT X 18 FT WAREHOUSE TRAILER PARKING STALL
	PROP. 14.5 FT X 60 FT WAREHOUSE LOADING STALL

THIS PLAN TO BE UTILIZED FOR SITE LAYOUT PURPOSES ONLY



REVISIONS

REV	DATE	COMMENT	DRAWN BY	CHECKED BY

811
Know what's below. Call before you dig.
NEW JERSEY
YOU MUST CALL 811 BEFORE ANY EXCAVATION WHETHER IT'S ON PRIVATE OR PUBLIC LAND.
1-800-272-1000
www.nj-811.org

PRELIMINARY

THIS DRAWING IS INTENDED FOR MUNICIPAL AND/OR AGENCY REVIEW AND APPROVAL. IT IS NOT INTENDED AS A CONSTRUCTION DOCUMENT UNLESS INDICATED OTHERWISE.

PROJECT No.: NJA220332.00
DRAWN BY: CRA / AMD / CR
CHECKED BY: TXL
DATE: 05/30/2023
CAD ID: NJA220332.00-SITE-08

PROJECT:
PRELIMINARY / FINAL SITE PLANS & MAJOR SUBDIVISION
FOR
AATGMN PROPERTY LLC
PROPOSED WAREHOUSES & RESIDENTIAL DEVELOPMENT
MAP: 11 | BLOCK 70 | LOTS 6.01 & 6.02
ROUTE 130 & KINKORA ROAD
TOWNSHIP OF MANSFIELD
BURLINGTON COUNTY, NEW JERSEY

BOHLER

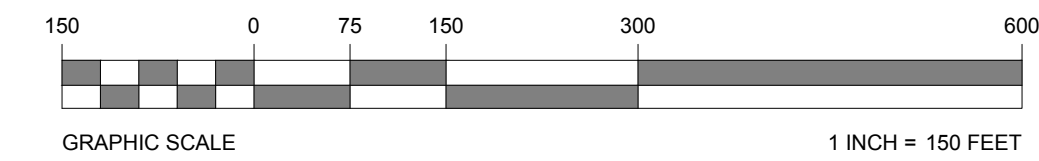
BOHLER ENGINEERING NJ, LLC
30 INDEPENDENCE BLVD., SUITE 200
WARREN, NJ 07059
Phone: (908) 685-8300
Fax: (908) 754-4401
www.BohlerEngineering.com
NJ CERT. OF AUTHORIZATION NO. 246A28161700 & M6000122

T. LAM
PROFESSIONAL ENGINEER
NEW JERSEY LICENSE NO. 47863
NEW YORK LICENSE NO. 092942
CONNECTICUT LICENSE NO. 30024
PENNSYLVANIA LICENSE NO. 76746

SHEET TITLE:
OVERALL SITE LAYOUT PLAN

SHEET NUMBER:
C-301

ORG. DATE - 05/30/2023



C:\0222\NJA220332.00\CADD\DRAWINGS\PLAN SET\CIVIL SITE PLANS\NJA220332.00-SITE-08---LAYOUT-C-301-OVERALL SITE